



MOUNT PROSPECT SCHOOL DISTRICT 57 BOARD OF EDUCATION
Administration Building
701 W. Gregory Street, Mount Prospect, IL 60056

AGENDA – REGULAR MEETING
January 23, 2020

Fairview School (Multipurpose Room) 300 North Fairview Avenue

Call to Order and Roll Call

Student Recognition

Communications

1. Board of Education
 - NSSEO Report
 - Education Foundation
 - PTO Reports
 - Board President Report
 - Cancel February 6 Board of Education Meeting

Community Comments

Staff Reports

1. Environmental Scan
2. Technology Strategic Plan Update (Goal 2b)
3. Superintendent's Report
 - a. Strategic Plan Scorecard Update

Consent Agenda

1. Minutes of the following Board of Education Meetings
 - Regular Business Meeting December 19, 2019 – Open Session
2. Personnel Transactions (Goals 5b and 6a)
3. Financial Report – December 2019 (Goal 6b)
4. Accounts Payable Bills (Goal 6b)
5. Approve Review of the Closed Session Minutes for the Period of January 2018 through June 2018 and Closed Session Audio Tapes for the Period of January 2018 through June 2018
6. Approve School Maintenance Grant Application

Unfinished Business

1. Approve the Following Board of Education Policies (Goals 1 – 6)
 - 2:20 – Powers and Duties of the School Board; Indemnification
 - 2:70 – Vacancies on the School Board – Filling Vacancies
 - 2:100 – Board Member Conflict of Interest
 - 2:105 – Ethics and Gift Ban
 - 2:110 – Qualifications, Term, and Duties of Board Officers
 - 2:200 – Types of School Board Meetings
 - 2:220 – School Board Meeting Procedure
 - 2:250 – Access to District Public Records
 - 2:260 – Uniform Grievance Procedure
 - 3:50 – Administrative Personnel Other Than the Superintendent
 - 4:15 – Identity Protection
 - 4:30 – Revenue and Investments
 - 4:40 – Incurring Debt

Mount Prospect School District 57 is subject to the requirements of the Americans with Disabilities Act of 1990, as well as Section 504 of the Rehabilitation Act of 1973. Individuals with disabilities who plan to attend this meeting and who require certain accommodations in order to allow them to attend and/or participate, or who have questions regarding the accessibility of the meeting or the facilities, are requested to promptly contact Dr. Elaine Aumiller at (847) 394-7300.

- 4:60 – Purchases and Contracts
- 4:80 – Accounting and Audits
- 4:110 – Transportation
- 4:140 – Waiver of Student Fees
- 4:150 – Facility Management and Building Programs
- 4:170 – Safety
- 4:175 – Convicted Child Sex Offender; Screening; Notifications
- 4:190 – Targeted School Violence Prevention Program
- 5:10 – Equal Employment Opportunity and Minority Recruitment
- 5:20 – Workplace Harassment Prohibited
- 5:30 – Hiring Process and Criteria
- 5:50 – Drug- and Alcohol-Free Workplace; E-Cigarette, Tobacco and Cannabis Prohibition
- 5:90 – Abused and Neglected Child Reporting
- 5:100 – Staff Development Program

Community Comments

New Business

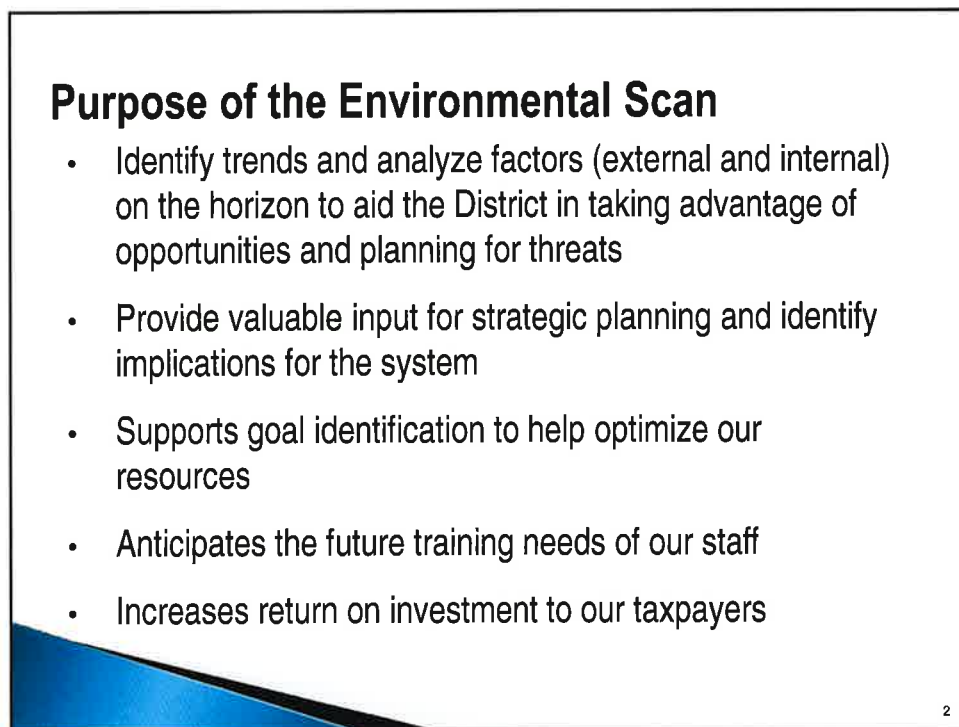
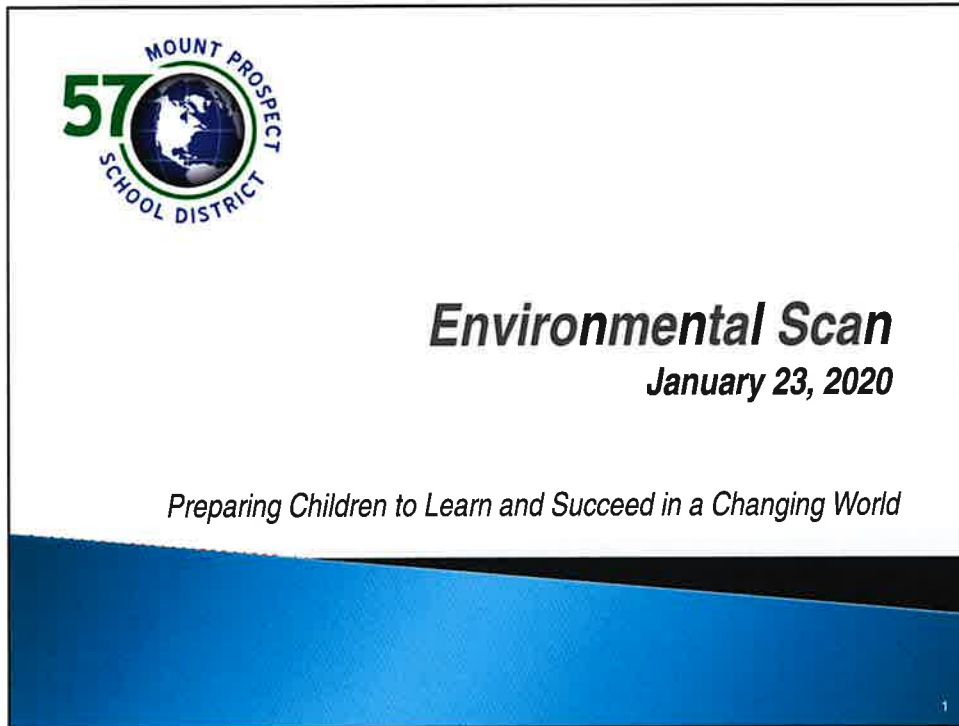
1. Approve Summer 2020 Site Work and Building Improvements Bid (Goal 6b)
2. Approve 2020 – 2021 Student Fees

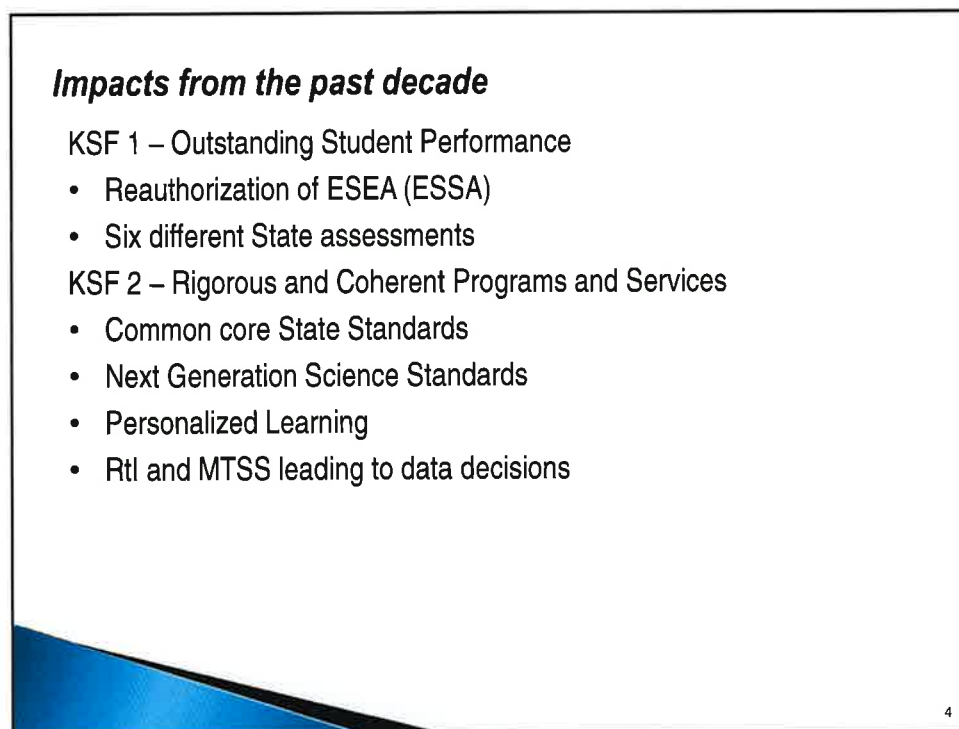
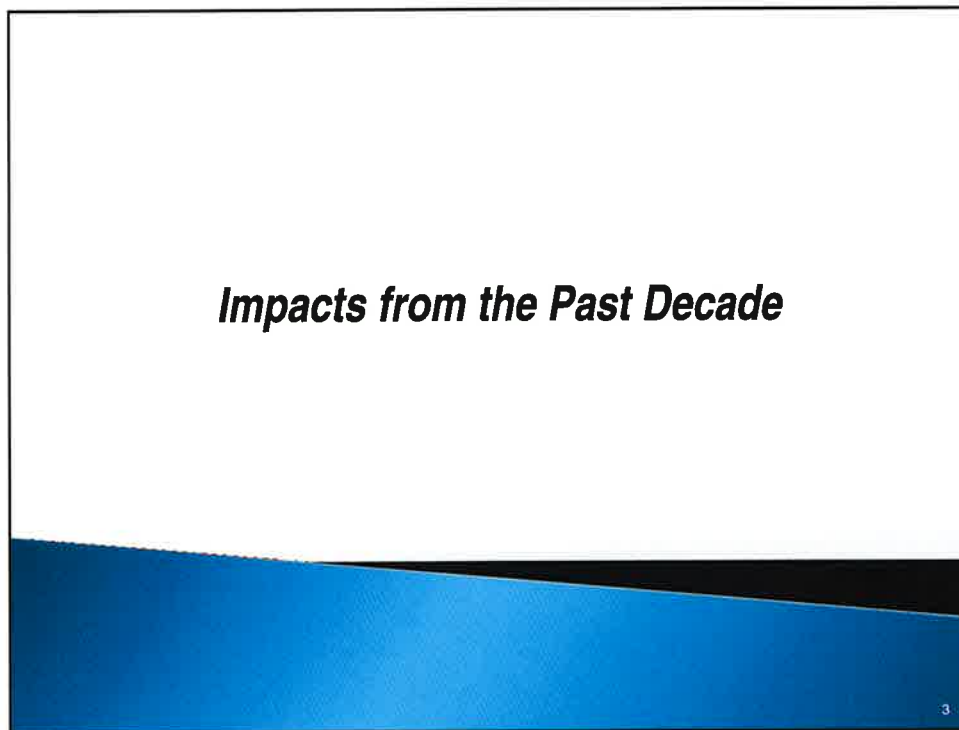
Board Discussion

Closed Session

Board Action may or may not take place following Closed Session

Adjournment





Impacts from the past decade

KSF 3 – Safe, Caring, and Supportive Learning Environment

- Equity in discipline (KSF 4)
- Emphasis on school climate (5Essentials)
- Heightened emphasis on SEL
- Increased complexity of children
- School shootings – heightened security
- Transgender rights and protections
- Vaping epidemic
- Parental rights increasing

5

Impacts from the past decade

KSF 5 – High-performing Work Force

- Teacher, instructional assistant, and substitute teacher shortages
- Teacher evaluation reform (PERA/SB7)
- Increased mandated training

KSF 6 – Healthy Financial Position

- School funding restructure (KSF5)
- Health care reform (PPACA)

Embedded themes reflected in multiple KSF's

- Mandated state and federal data collection
- Increased mandates (communication, special education, trainings)
- Social media

6



Factor #1 - Outstanding Student Performance
Findings: Factors, Trends, and Implications
Every Student Succeeds Act – ESSA
Summative Designations

Tier 1 Exemplary School: A school that has no underperforming subgroups, a graduation rate of greater than 67 percent, and whose performance is in the top 10% of schools statewide. A school that receives a Tier 1: Exemplary School designation may apply to serve in the IL-EMPOWER network of partners.

Tier 2 Commendable School: A school that has no subgroups performing at or below the level of the "all students" group in the lowest 5% of Title I schools, a graduation rate greater than 67 percent, and whose performance is not in the top 10% of school statewide. A school that receives a Tier 2: Commendable School designation may apply to serve in the IL-EMPOWER network of partners.

Tier 3 Underperforming School: A school in which one or more subgroups is performing at or below the level of the "all students" group in the lowest 5% of Title I schools. A school that receives a Tier 3: Underperforming School designation will receive targeted support.

Tier 4 Lowest Performing School: A school that is in the lowest-performing 5% of Title I School in Illinois and those high schools that have a graduation rate of 67% or less. A school that receives a Tier 4: Lower Performing School designation will receive comprehensive support through IL-EMPOWER.

8

Factor #1 - Outstanding Student Performance
Findings: Factors, Trends, and Implications

Every Student Succeeds Act - ESSA
Indicator Weighting for Core Academics

	2018-19	2019-20
Core Academics Total Weight: 75%	ELA Proficiency - 10%	ELA Proficiency - 7.5%
	Math Proficiency - 10%	Math Proficiency - 7.5%
	ELA and Math Growth - 50%	ELA and Math Growth - 50%
	EL Proficiency - 5%	EL Proficiency - 5%
	Science Proficiency - 0%	Science Proficiency - 5%

9

Factor #1 - Outstanding Student Performance
Findings: Factors, Trends, and Implications

Every Student Succeeds Act - ESSA
Indicator Weighting for Student Success/School Quality

	2018-19	2019-20
Student Success/ School Quality Total Weight: 25%	Chronic Absenteeism - 20%	Chronic Absenteeism - 5-10%*
	Climate Survey - 5%	Climate Survey - 5%
	Elementary/MS Indicator - 0%	Elementary/MS Indicator - 5%**
	P-2 Indicator - 0%	P-2 Indicator - 5%
	Fine Arts Indicator - 0%	Fine Arts Indicator - 0%-5%

*Weight depends on Fine Arts weighting

**The plan indicates these indicators will be weighted in 2019-20; however, the ISBE work group recommended keeping it at 0% and absenteeism at 15-0% until further study is completed.

10

Factor #1 – Outstanding Student Performance
Findings: Factors, Trends, and Implications

**Illinois Assessment of Readiness
(IAR)**

1. The IAR assessment will be administered this spring; however, administration window is still undetermined.
2. The ISBE indicates that the assessment will become computer-adaptive by 2021.

11

KSF #2
Coherent^{and} Rigorous
Programs^{and} Services

12

**Factor #2 –
Coherent /Rigorous Programs/Services
*Findings: Factors, Trends, and Implications***

- **Curriculum Review 2020 – 21**
 - Writing--Phase IV Work Process Implementation and Phase V Refinement
 - Reading/Math/Science/Social Studies--Phase V Refinement
 - Ed Tech and World Language--Phase I Evaluation/Research
 - Social Emotional Learning (SEL) Standards--Phase IV Work Process Implementation
 - 1:1 Chromebooks 5th--Phase V Refinement
- Continue to monitor the implementation of additional LN math minutes

13

***KSF #3
Safe, Caring, and Supportive
Learning Environment***

14

**Factor #3 –
Safe, Caring, Learning Environment**
Findings: Factors, Trends, and Implications

Lions Park

- Closely monitor enrollment patterns to determine expansion needs
- Install air conditioning in gym
- Replace large chiller and HVAC controls
- Rebuild LP and FV parking lots

Westbrook

- Replace HVAC controls at WB
- Replace asphalt in basketball courts
- Install sensory floors in EC hallway at WB

15

**Factor #3 –
Safe, Caring, Learning Environment**
Findings: Factors, Trends, and Implications

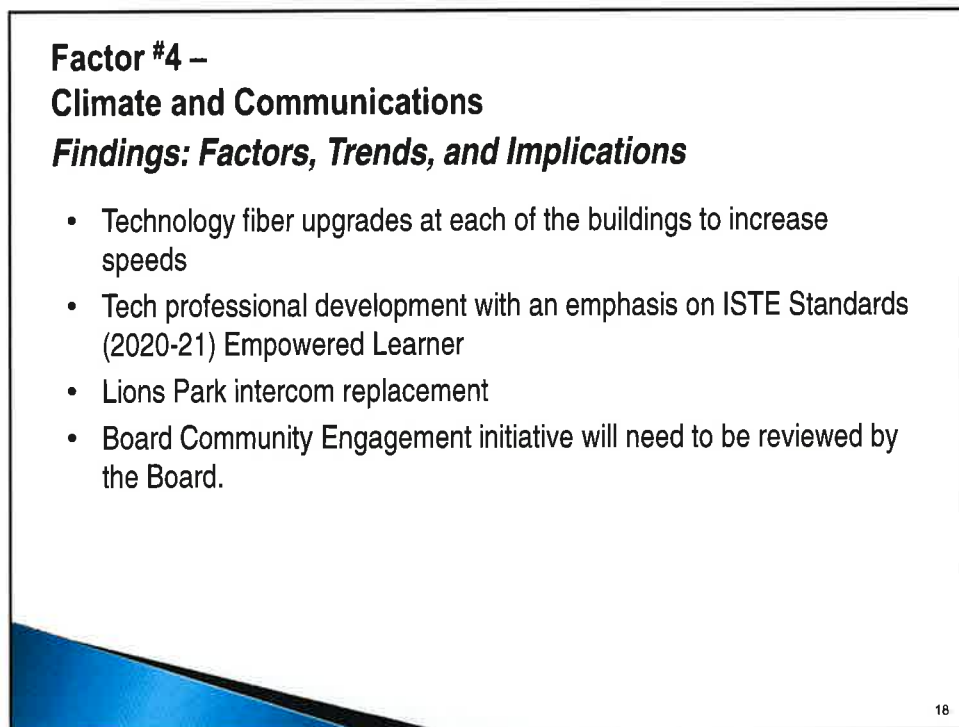
At Lincoln

- Replace Busse Gym HVAC unit & install air conditioning
- Replace HVAC controls for gym and main offices
- Replace floors in all classrooms, cafeteria and locker rooms
- Repair and repaint hallway lockers
- Add 2 generators
- Surveying parents and students for food service

Admin Building

- Build receiving room at dock entrance
- Replace windows and remove asbestos (alternate bid)

16





**Factor #5 –
High-performing Workforce**
Findings: Factors, Trends, and Implications

Staffing Plan

- FY21 staffing plan FTE will remain near status quo to FY20 with any adjustments necessary to comply with Policy 6:200.

**Shortages in Substitute Teachers, Teachers,
Principals and Aides**

- The sub shortage is evident and we have been understaffed on many days
 - We try not to conduct curriculum work on regular school days to the extent we have in the past.
 - We regularly have to reassign instructional assistants to teaching positions.

20

**Factor #5 –
High-performing Workforce**

Findings: Factors, Trends, and Implications

- The MPESPA CBA runs through June 2024.
- Current MPEA CBA runs through June 2021. Negotiations tentatively will begin Winter 2021.
- Monthly meetings with both association leadership teams are held to continue to build and maintain open dialogue.

21

***KSF #6
Healthy Financial Position***

22

**Factor #6 –
Healthy Financial Position**

Findings: Factors, Trends, and Implications

AT THE FEDERAL LEVEL...

- CPI for 2019 is **X.X%**. It will affect the FY22 budget year.
- The District continues to implement the various administrative provisions of ACA and continues to plan forward for any changes that may impact benefit program delivery. We will continue to monitor changes to the law and implement accordingly.

23

**Factor #6 –
Healthy Financial Position**

Findings: Factors, Trends, and Implications

AT THE STATE LEVEL...

- We continue to monitor the financial stability of the State of Illinois, including legislation on the following topics:
 - State budget
 - Pension obligations - cost shift to employers
 - Property tax freeze

24

**Factor #6 –
Healthy Financial Position**

Findings: Factors, Trends, and Implications

AT THE LOCAL LEVEL...

- Administration will continue to work with the Village and Park District on finances, programs and shared services.

25

***Key Challenges
for 2020 and Beyond***

26

Key Challenges for 2020 and Beyond

- Meet/Exceed performance expectations on Illinois Assessments of Readiness (IAR)
- Develop and implement curricula that addresses standards and identifies appropriate instructional resources in all subject areas.
- Proactively navigate a continuously changing technology environment to meet our instructional and organizational goals.
- Upgrading and maintaining facilities.
- Continue to expand on a 21st century learning environment.
- Implement national and state reform legislation.
- Proactively manage in an environment of changing funding patterns and increased financial mandates from the state and federal governments.

27

Next Steps

- Refine Short- and Long-Term Action Plans, and Internal Documents (Staffing Plan, MFP, Curriculum, Technology, and Communication Plans)
- We will present our final draft of the revised Strategic Plan to the Board of Education in May for their approval.
- The Administration will implement the revised Strategic Plan for 2020 – 2021.

28

**Mount Prospect School District 57
Office of the Director of Technology**

To: Dr. Elaine Aumiller
From: Trevor Hope, Director of Technology
Date: January 23, 2020
Re: Information- Technology Strategic Plan Update

Executive Summary:

As we look ahead, the district will need to continue to invest in technology infrastructure upgrades, equipment and professional development in order to meet the strategic objective for Key Success Factor #2 Coherent and Rigorous Programs and Services documented on the District 57 Strategic Plan.

Background:

The following are key areas of consideration:

Infrastructure:

Over the last several years, the district has made several improvements to the network including installation of a dark fiber Wide Area Network (WAN), a new and more secure firewall and new switches at all buildings. The steps moving forward will be upgrading internal fiber connections as well as battery backup upgrades.

Each building in the district has a core switch in the Main Distribution Frame (MDF) which were replaced in the summer of 2018. All buildings have switches in their Intermediate Distribution Frame (IDF), which connects the parts of the buildings too far away from the MDF, anything over 250 feet. IDF switches were replaced across the district in the summer of 2019. Unfortunately, the old fiber running from MDF closets to IDF closets is too old to take advantage of the higher speeds our dark fiber WAN and new switches can provide. New, faster fiber runs between closets are tentatively planned for this summer.

Our wireless infrastructure will be five years old at Lincoln and Fairview this summer. Lions Park and Westbrook's equipment will be five years old in 2021. The district has reviewed existing equipment and will need to start replacement and upgrades during the summer of 2021. Existing equipment will not be supported by the manufacturer past 2022.

Devices:

The 1:1 Chromebook initiative at Lincoln continues to be a success. The fifth grade 1:1 rollout has been a success as well. The district continues to support the initiatives with ongoing professional development through instructional technology coaches and teacher in-service days as well as regular meeting with teachers to receive feedback. All grades above 1st grade have 1:1 access to Chromebooks. Only fifth through eighth grade take them home.

The number of devices should remain steady throughout the district with fluctuations due to enrollment.

Professional Development:

With our mission statement in mind, *Preparing Children to Learn and Succeed in a Changing World*, the technology department has adopted a seven-year plan to focus on the seven standards of the International Society for Technology in Education (ISTE) with students, staff and parents. The district's three instructional technology coaches have all become ISTE standards certified in the last year. The focus continues to be on professional development for teachers and staff. This year's theme is on being a good Digital Citizen. Lessons include addressing topics such as ensuring digital privacy and security, making healthy media choices and engaging in positive, legal and ethical behavior when using technology.

Technology Plan '20-21

Mount Prospect School District 57

	Strategic Challenges	Key Action Plan
Support Climate and Communi- cations	Access information Infrastructure	<ol style="list-style-type: none"> 1. Update websites <ol style="list-style-type: none"> a. Continue to enhance school websites with current information that is both timely and relevant (ST/LT) b. Monitor website content and ensure ADA compliance 2. Automate school-home communication where appropriate <ol style="list-style-type: none"> a. Increase parent input and use of PowerSchool Parent Portal (LT) 3. Continue to monitor online tools to facilitate community input (LT)
	Design & Deliver Coherent and Rigorous Programs and Services	Staff training Infrastructure Access to tech Instructional time

Technology Plan '20-21 cont.

Mount Prospect School District 57

Support Highly Qualified Staff	Strategic Challenges	Key Action Plan
	<p>Time for Training: Staff training needs to happen during the day or using flexible methods</p> <p>Staff Support: Current instructional support staff better able to meet demand</p>	<ol style="list-style-type: none"> 1. Investigate options for increasing staff development opportunities (LT) 2. Implement International Society for Technology and Education (ISTE) standards via seven year technology integration vision. (LT/ST) <ol style="list-style-type: none"> a. For students: empower student voice, ensure that learning is a student-driven process, and thrive, grow and contribute in a global society b. For educators: deepen practice and promote collaboration with peers, challenge staff to rethink traditional approaches, and prepare students to drive their own learning c. 2019-20: Digital Citizen d. 2020-21: Empowered Learner e. 2021-22: Global Communicator f. 2022-23: Creative Communicator g. 2023-24: Innovative Designer h. 2024-25: Knowledge Constructor i. 2025-26: Computational Thinker
Maximize Connectivity In/Beyond the Classroom	Strategic Challenges	Key Action Plan
	<p>Technology support staffing to computer ratio</p> <p>Aging middle school infrastructure</p>	<ol style="list-style-type: none"> 1. Standardized process for evaluating technology purchases (LT) <ol style="list-style-type: none"> a. Impact on technology standards b. Total Cost of Ownership c. Support capability 2. Computer Replacement (ST/LT) <ol style="list-style-type: none"> a. Continue staff replacement plan: every 4 years b. Investigate new options for staff c. Continue student replacement plan: every 4 years 3. Repair and/or replace intercom systems at Westbrook, Fairview and Lions Park (LT/ST) <ol style="list-style-type: none"> a. Replace Lions Park intercom system, summer 2020 (ST) b. Continue to monitor Westbrook and Fairview systems (LT/ST) 4. Plan for needed network infrastructure upgrades across district (LT/ST) <ol style="list-style-type: none"> a. Wireless upgrades starting summer 2021 (LT/ST) b. Building internal fiber enhancements (ST) c. Implement VOIP changes to comply with Kari's law (ST) d. Perform annual safety threat assessment (LT/ST) 5. Monitor new safety and security systems at all buildings (ST/LT) <ol style="list-style-type: none"> a. Cameras at all building main entrances b. Review and enhance interior cameras at Lincoln



District 57
Technology Plan
January, 2020





Technology Integration Vision

District 57's staff and students are purposeful with their integration of technology and will increase opportunities for success.





2019-2020 Digital Citizen



Students recognize the rights, responsibilities and opportunities in an interconnected digital world, and they act in ways that are safe, legal and ethical.

Educators inspire students to positively contribute to and responsibly participate in the digital world.

Collaborative

Consistent

Cohesive

Join Us on a Technology Adventure!



Travel Itinerary



District

Cohesive
Message & Plan

Schools

Social Media
Outreach

#D57Learns
#DigitalD57

Staff

Ongoing PD
Newsletters

Incentive
Program

Students

Monthly Digital
Citizenship
Lessons

Parents

Fall & Spring
Parent Night

Digital Citizenship
Tips & Strategies

Digital Citizenship Focus

Students





Mrs Woldenberg @HermansonMs · Oct 7, 2019

This @CommonSenseEd lesson was perfect for our advisory period today! Thanks to @Ms_Sassatelli for putting it together! We had great conversation about creating a healthy media balance in our lives! #D57Learns #DigitalD57



My Media Use: A Personal Challenge



1

5



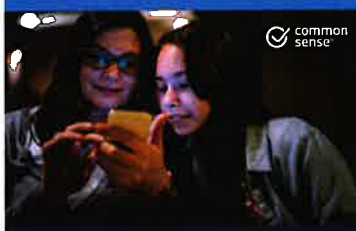
Parent Academy

1st Trimester



Plugged in Parents:
Keeping kids safe, happy, and healthy in the digital age

2nd Trimester



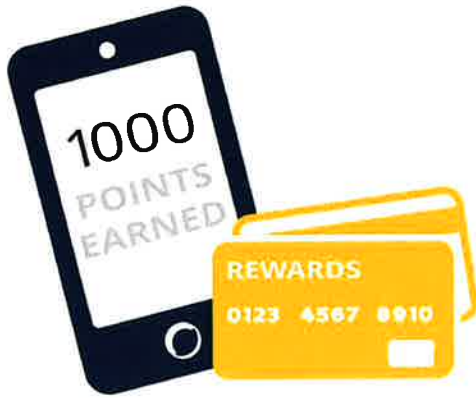
Learning with Technology:
Supporting Education at Home

3rd Trimester



Social Media, Gaming, and
Mental Health

Earning Frequent Flyer Miles



- August PD
- Institute Day Sessions
- Building Level PD
- D57 Download
- Social Media Posts
- Meet with a Coach
 - Team
 - Individual

District 57 has earned a total of

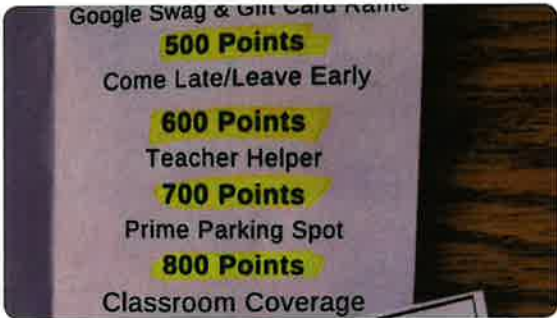

40,922 miles



Ms DiVito @Ms_DiVito · Nov 14, 2019
 Rockstar parking thanks to @Ms_Sassatelli ✨ #digitald57 #d57learns

Mrs Woldenberg @HermansonMs · Nov 14, 2019
 Congrats @Ms_DiVito 🎉🎉
 #reservedspot #d57learns #digitald57

Joanne Burger @Joanne_Burger · Dec 12, 2019
 Flying along with my Tech Frequent Flyer Miles! 800 POINTS!! Woohoo!
 #MrsBurgersClass #DigitalD57 #D57Lincoln #D57Learns

1 4 7

5th Grade 1:1 Chromebooks

Teacher Celebrations

- Student Responsibility
- Accessibility
- Engagement



5th Grade 1:1 Chromebooks

Teacher Challenges

- Monitoring Chromebooks during independent times
- Student Participation when forgotten or charging
- Parent Confidence with the tool



Top 3 Results

73% of parents

Watching required videos or completing homework online

72% of parents

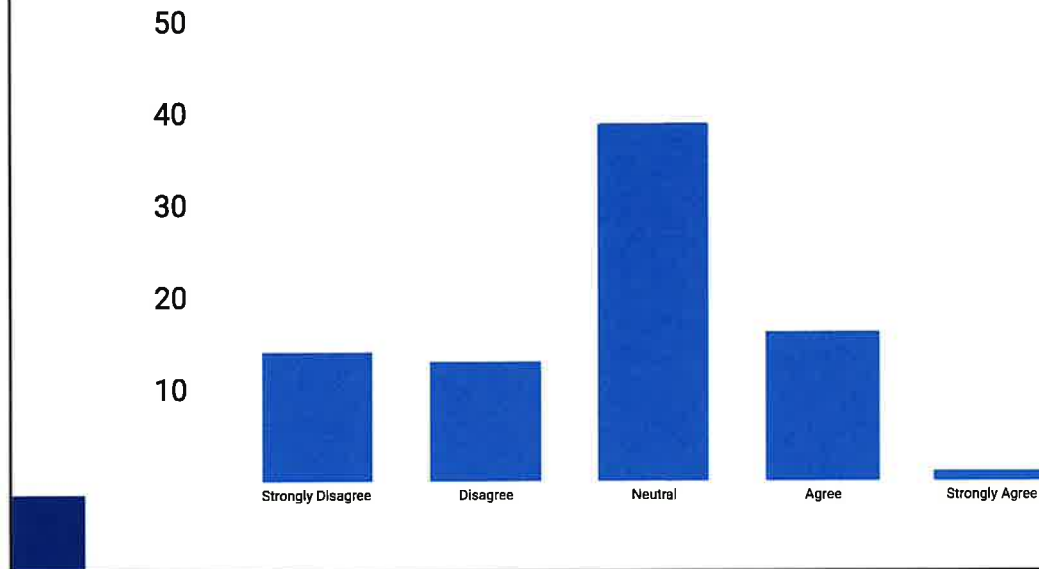
Writing
(essays, reports, assignments)

64% of parents

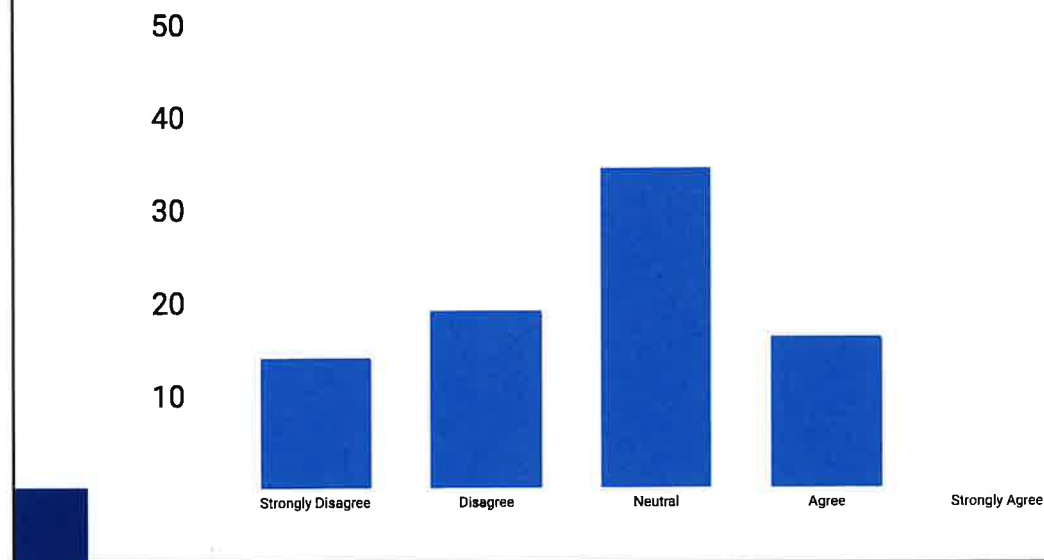
Creating a presentation
(Google Slides, video, animation)

I have observed or heard my child talk about using their chromebook for the following school-related tasks:

Since having the Chromebook, my child has shown a greater interest in school. (83 responses)

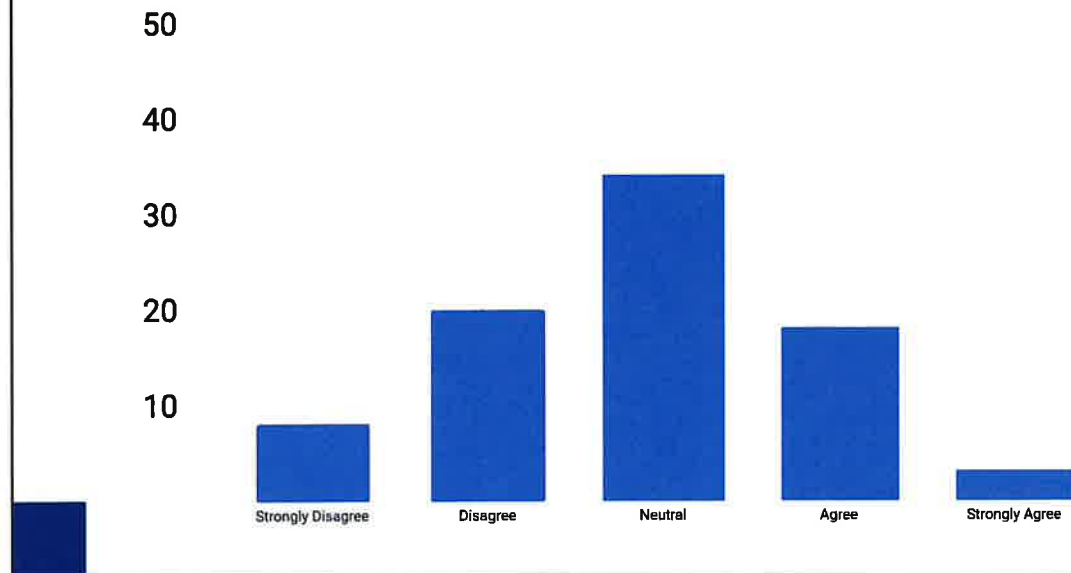


Since having the Chromebook, my child's performance in school has improved. (83 responses)

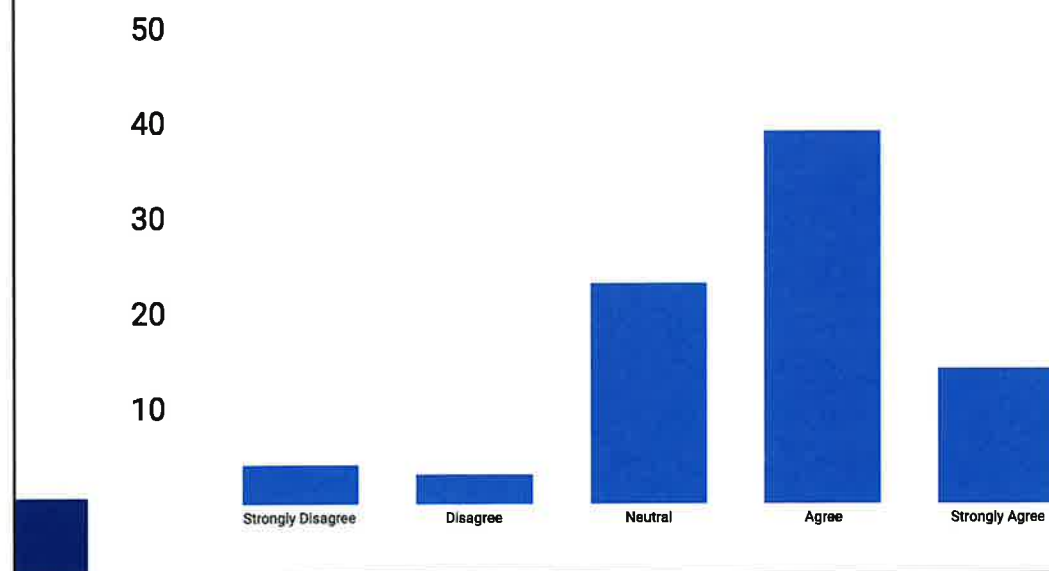


Since having the Chromebook, I feel my child seems more enthusiastic about doing school work at home. (

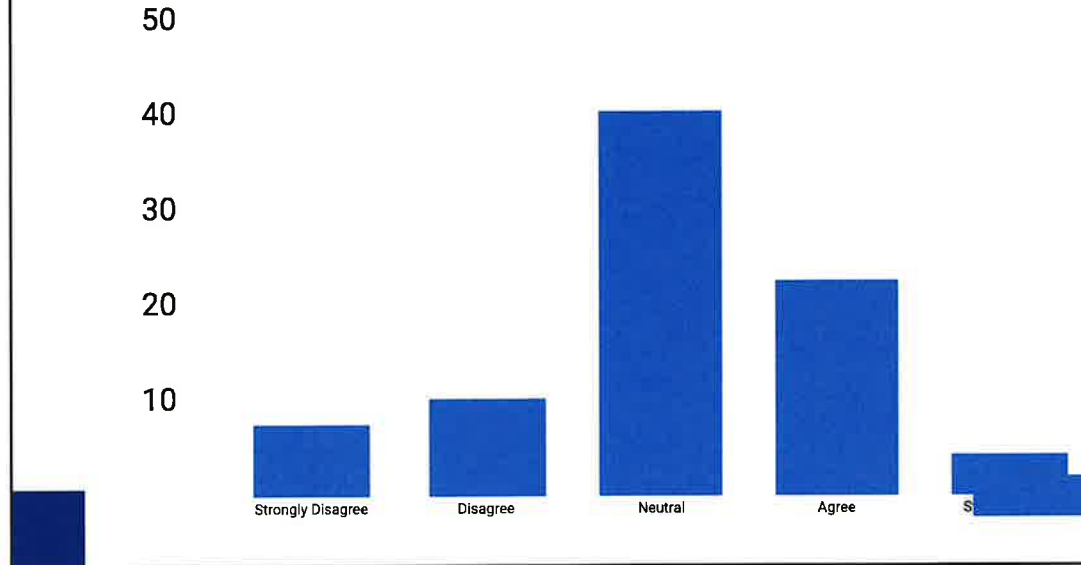
83 responses)



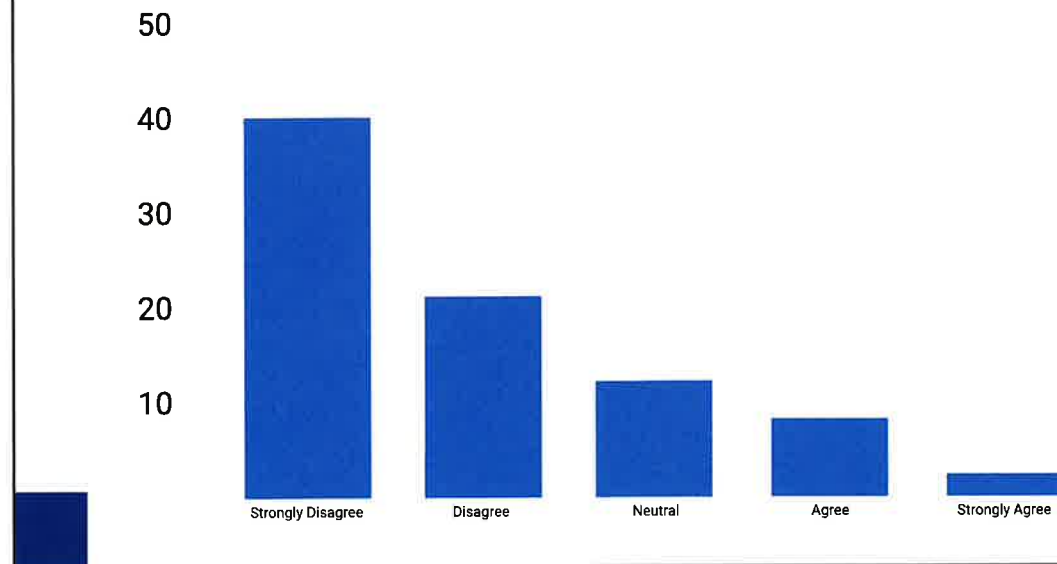
I think the chromebook helps my child become more digitally literate at school. (83 responses)



I think the chromebook has made a positive difference in my child's learning. (83 responses)



I think the chromebook has made a negative difference in my child's learning. (83 responses)



Tech Strategic Plan

- Technology Steering Committee:
 - Monitor 1:1 initiative
 - Feedback on new programs such as copiers, chromebooks etc.



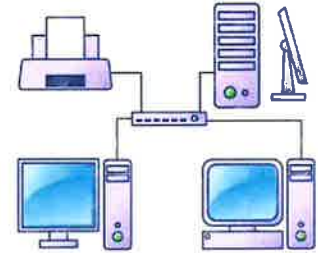
Infrastructure & Equipment

- Network upgrades:
 - Upgrade fiber within buildings
 - Increase speed between networking closets
 - Enhance wireless at Lincoln
 - Plan for district wireless upgrade starting Summer 2021



Infrastructure & Equipment

- **Aging Intercom Systems:**
 - **Replace Lions Park System Summer 2020**
 - **Evaluate Fairview and Westbrook systems**
 - **Lincoln replaced Summer 2017**
- **Safety and Security:**
 - **Review exterior cameras installed Summer 2019**
 - **Monitor and enhance Lincoln interior cameras**



Copier and Print Usage

- **All copiers and printers were replaced in July 2018**
- **District-wide there were 96 printing devices, including:**
 - **5 large capacity copiers**
 - **12 small capacity copiers**
 - **79 printers in offices in classrooms (1 color printer per building)**



Copier and Print Usage

- District-wide there are now 36 printing device including:
 - 6 large capacity copiers
 - 5 medium capacity copiers
 - 4 medium capacity color copiers
 - 21 small capacity copiers



Usage and Cost

Previous Usage:	542,000 pages/month	6,504,000 pages/year
Previous Cost:	\$8,800/month	\$105,600/year
Current Usage:	480,000 pages/month	5,706,000 pages/year
Current Cost:	\$6,800/month	\$82,000



Savings

- 62,000 pages per month or approximately 8 trees
- 798,000 pages per year or approximately 100 trees
- \$2,000 saved per month
- \$24,000 saved per year



Questions?



**MOUNT PROSPECT SCHOOL DISTRICT 57
BOARD OF EDUCATION**

Minutes

December 19, 2019 7:00 PM

**Fairview School (Multipurpose Room)
300 North Fairview Avenue**

Call to Order and Roll Call

President Eileen Kowalczyk called the Regular Business Meeting of the Board of Education of Dec. 19, 2019, to order at 7 p.m. Board members present: Eileen Kowalczyk, Vicki Chung, Kimberly Fay, Jennifer Kobus, Gerald McCluskey, Brian Maye and Rachael Rothrauff.

Student Recognition

Lions Park Peer Mediators: Principal Katie Kelly recognized this group of students and their leaders, Gail Valentini and Julie Gayle. The peer mediators are selected from many applicants, using a rigorous application process. They attend a two-day training session in the summer, along with the Fairview peer mediators. These students serve as leaders and role models and mediate playground conflicts. Dr. Aumiller and Board president Eileen Kowalczyk presented the students with certificates of recognition.

Communications

1. Board of Education

- NSSEO Report: None
- Education Foundation: Member Kowalczyk reported that the Foundation had many grant requests in the fall and approved as many as possible. Members encourage people to re-submit any requests were not accepted. The Foundation is now working on planning the Gala.
- PTO Reports: Member McCluskey reported on the Lincoln PTO meeting.
- Illinois Joint Annual Conference: Member Fay reported on being a delegate at this statewide conference in November and the results of voting on several school safety resolutions.

Community Comments

Lincoln teacher Loretta Rose spoke on behalf of the MPEA and expressed thanks for the support the current administration and Board have given. She said this has enabled the teachers to provide a high-quality education to the children of the community.

Public Hearing on 2019 Tax Levy

Mr. Parisi led a public hearing that is intended to give community members a chance to comment on the levy, which is the amount the district will request to be raised from property taxes.

- Notice of the hearing was published in the Mount Prospect Journal on Dec. 11.
- There was no public or Board comment.
- Mr. Parisi will file the levy on Dec. 20.

Mount Prospect School District 57 is subject to the requirements of the Americans with Disabilities Act of 1990, as well as Section 504 of the Rehabilitation Act of 1973. Individuals with disabilities who plan to attend this meeting and who require certain accommodations in order to allow them to attend and/or participate, or who have questions regarding the accessibility of the meeting or the facilities, are requested to promptly contact Dr. Elaine Aumiller at (847) 394-7300.

Staff Reports

- Presentation of the 2019 Satisfaction Survey Results (Goal 5a)

Bill Foster from School Perceptions reported on results of the community survey that was given this fall. Here are some highlights:

- Participation: 1,257 respondents, which is a very good rate from a statistical standpoint (111 staff members, 656 parents participated)
 - Budget priorities: respondents indicated that these are the top priorities where the District should focus its efforts: maintaining co-curricular and extra-curricular programs, maintaining elementary/middle school class sizes, recruiting and retaining high-quality staff, and maintaining support services for student who have difficulty learning
 - District communications: 84% of parents say the frequency of communication is just right, 86% of parents rate the content of communication as very effective or somewhat effective
 - Lincoln Middle School: 41% of parents support the District exploring the option of building a new middle school, 16% support addressing maintenance and renovating the existing school, 21% do not support either option, and 22% are not sure/need more information
 - Overall satisfaction: when asked whether they would recommend the District to a friend moving into the area, staff agreement was at 4.33, parent agreement was at 4.44 and non-parent/non-staff agreement was at 4.26 (with ratings ranging from 5 for strongly agree to 1 for strongly disagree)
 - 67% of parents rate District 57 much better or a little better than neighboring districts
 - Overall, 91% of parents are very satisfied or satisfied with District 57
 - The report also includes feedback on staff performance and on each school
- 2020-21 Student Fees Presentation (Goal 6b)

Mr. Parisi presented a proposed schedule for student fees for the next school year. This includes curriculum, supplies and other fees, transportation, extracurricular, lunch program, summer school, preschool and childcare. This is the Board's first discussion of fees for next school year; no vote was taken.

- Curriculum fees and Kids corner have remained the same since 2011-12, transportation fees have remained the same since 2012-13.
- Mr. Parisi reviewed Kids Corner enrollment, which has risen this past year and had to be capped for the first time.
- The District is recommending that fees stay the same for the 2020-21 school year.

- Board members discussed whether additional TIF funds could be used to reduce fees, which would result in a discount of approximately \$10 per student. They also discussed the possibility of reducing Kids Corner fees, perhaps by implementing a discount for multiple kids. They discussed the challenges of finding staff for Kids' Corner.

Superintendent's Report

Dr. Aumiller reported on one Freedom of Information Act Request (FOIA).

Consent Agenda

1. Minutes of the Regular Business Meeting November 21, 2019 – Open and Closed
 - President Kowalczyk entertained a motion to approve the Consent Agenda. Member Chung moved and Member Fay seconded. Roll call vote resulted as follows:
 - Yes: Chung, Kowalczyk, Fay, Kobus, McCluskey, Maye, Rothrauff
 - No: None
 - Abstain: None
 - Motion carried

New Business

1. Approved Resolution 191219 Authorizing Levy and Reduction of Certain Fund Levies for the 2019 Levy Year (Goal 6)
 - Member Rothrauff motioned to approve, member Faye seconded. Roll call vote resulted as follows:
 - Yes: Chung, Kowalczyk, Fay, Kobus, McCluskey, Maye, Rothrauff
 - No: None
 - Abstain: None
 - Motion carried

Board Discussion

The Board decided to have the next Community Forum at 7 p.m. on March 5 at Lincoln. The topic will be exploring the results of the Satisfaction Survey, including questions related to the aging Lincoln Middle School.

Adjournment

There being no further business to come before the Board, President Kowalczyk entertained a motion to adjourn the meeting. Member Fay made the motion and Member Chung seconded. All members voted yes and the meeting adjourned at 8:35 p.m.



**Mount Prospect School District 57
Board of Education**

**PERSONNEL TRANSACTIONS
JANUARY 23, 2020**

POLICY REFERENCE 5:30

That the Board of Education approve the employment of the following ESP individual:

<u>Name</u>	<u>Position</u>	<u>Location</u>	<u>Hire Date</u>	<u>Salary</u>
Dalila Rodriguez	Instructional Assistant	Fairview	1/6/20	\$13.50/hour

That the Board of Education approve the retirement of the following ESP employee:

<u>Name</u>	<u>Position</u>	<u>Location</u>	<u>Effective Date</u>
Jung S. Sulik	Kids' Corner Asst. Supervisor	Westbrook	End of 2019-20 School Year

MOUNT PROSPECT SCHOOL DISTRICT 57

Monthly Financial Report January 2020

**Fund Balance Report
Treasurer's Report
Revenue Report
Expenditure Report
Cash and Investment Summary
Payroll Ratification
Accounts Payable Ratification**

Adam Parisi
Assistant Superintendent
for Finance and Operations/CSBO

Nick Honcharuk
Accounting Coordinator

Mount Prospect School District 57

Fund Balance Report

December 2019

Board Funds

Fund	Description	Audited	YTD	YTD	YTD	Fund
		Fund Balance	Revenues	Expenditures	Transfers	Balance
		7/1/2019				12/31/2019
10	Educational	\$ 6,465,769	11,130,653	9,204,033	\$ -	\$ 8,392,389
20	Operations & Maintenance	2,608,852	1,816,187	995,105	-	3,429,934
30	Debt Service	1,398,343	358,338	596,043	-	1,160,638
40	Transportation	896,118	566,836	338,072	-	1,124,882
50	I.M.R.F.	259,591	106,858	129,234	-	237,215
51	Social Security	64,898	168,388	188,168	-	45,118
60	Capital Projects	-	1 **	2,994,434	-	(2,994,433)
70	Working Cash	2,314,189	151,222	(1) **	-	2,465,412
Total		\$ 14,007,760	\$ 14,298,483	\$ 14,445,088	\$ -	\$ 13,861,155

Activity Fund

Account	Description	Balance	YTD	YTD	YTD	Account
		7/1/2019	Revenues	Expenditures	Transfers	Balance
						12/31/2019
100	Education Foundation	\$ 1,380	41,181	38,988		\$ 3,574
300	Fairview Clearing	16,654	636	6,290	(3,151)	\$ 7,849
400	Lincoln Clearing	44,395	1,205	26,200		\$ 19,400
500	Lions Park Clearing	9,150	1,182	3,849		\$ 6,482
600	Westbrook Clearing	21,766	8,058	6,242	(15)	\$ 23,566
Total		\$ 93,344	52,262	81,569		\$ 60,871

Mount Prospect School District 57

Treasurer's Report

December 2019

Institution	Type	Yield	Value
BMO-Harris Bank	Collateral MMA	2.25%	\$ 544,345
Fifth Third Bank (fka MB Financial)	Collateral MMA	1.69%	\$ 1,035,630
PMA	Collateral SDA/FDIC MMA	1.80-2.20%	\$ 9,910,566
IL Funds	LGIP	1.76-1.96%	\$ 2,788,757
Total:			\$ 14,279,298

Monthly Interest Earned:



Mount Prospect School District 57

Revenue Report December 2019

Source	Source Description	Budget	Activity	Balance	% of budget remaining	
					2020 YTD	2019 YTD
11XX	Property Taxes	\$ 25,224,609	\$ 10,989,838	\$ 14,234,771	56.4%	54.5%
1230	CPPR Taxes	537,000	235,634	301,366	56.1%	60.6
13XX	Summer School Tuition	7,000	6,030	970	13.9%	19.0
1411	Transportation Fees	305,000	316,958	(11,958)	-3.9%	6.8
1510	Interest Earnings	316,130	109,626	206,504	65.3%	19.6
1611	Food Service Fees	195,000	106,439	88,561	45.4%	31.9
1720	Activity Fees	142,600	93,662	48,938	34.3%	28.6
1811	Instruction Fees	264,000	253,971	10,029	3.8%	3.2
1910	Facility Rentals	100	-	100	100.0%	100.0
1920	Donations	100	-	100	100.0%	100.0
1950	Refund of PY Expenditures	30,100	5,643	24,457	81.3%	79.7
1960	TIF Revenue	18,000	-	18,000	100.0%	0.0
1993	Kids' Corner & Circle of Friends	845,000	459,397	385,603	45.6%	37.4
1999	Other Local Revenues	75,100	82,334	(7,234)	-9.6%	16.2
Sub-Total Local		\$ 27,959,739	\$ 12,659,530	\$ 15,300,209	54.7%	52.2%
3001	Evidence Based Funding Formula (GSA)	1,999,305	908,775	1,090,530	54.5%	17.4
31XX	Special Education	50,000	5,346	44,654	89.3%	44.9
3305	Bilingual Education	15,000	-	15,000	100.0%	33.0
3360	Food Service	800	162	638	79.8%	69.8
35XX	Transportation	73,500	54,283	19,217	26.1%	51.2
3780	Library Grant	1,600	-	1,600	100.0%	100.0
Sub-Total State		\$ 2,140,205	\$ 968,565	\$ 1,171,640	54.7%	31.0%
42XX	Food Service	54,000	18,349	35,651	66.0%	59.8
4300	Title I	190,000	51,618	138,382	72.8%	93.9
46XX	Special Education	527,044	478,916	48,128	9.1%	31.3
4869	Stimulus Programs	35,000	36,159	(1,159)	-3.3%	50.1
4909	Title III	16,500	30,558	(14,058)	-85.2%	88.6
4932	Title II	44,000	22,288	21,712	49.3%	80.4
49XX	Medicaid Matching	100,000	32,498	67,502	67.5%	16.7
Sub-Total Federal		\$ 966,544	\$ 670,386	\$ 296,158	30.6%	52.1%
Total		\$ 31,066,488	\$ 14,298,482	\$ 16,768,006	54.0%	50.6%

Mount Prospect School District 57

Expenditure Report December 2019

Function	Program Name	Budget	Activity	Balance	% of budget remaining	
					2020 YTD	2019 YTD
1000	Mentoring Stipend	\$ 23,000	\$8,578	\$ 14,422	62.7%	64%
11XX	Regular Programs	11,047,002	\$4,194,044	\$ 6,852,958	62.0%	63.67
1200	Special Education Programs	3,525,399	\$1,426,110	\$ 2,099,289	59.5%	60.28
1500	Interscholastic Programs	143,046	\$50,342	\$ 92,704	64.8%	62.18
1600	Summer School Programs	18,000	\$18,833	\$ (833)	-4.6%	32.09
1800	Bilingual Programs	259,766	\$86,761	\$ 173,005	66.6%	65.61
2110	Social Worker	394,695	\$139,308	\$ 255,387	64.7%	66.75
2130	Health Services	286,421	\$124,044	\$ 162,377	56.7%	57.08
2140	Psychological Services	225,364	\$83,584	\$ 141,780	62.9%	65.36
2150	Speech & Audiology Services	642,672	\$232,633	\$ 410,039	63.8%	66.59
2190	Other Support Services - Pupils	214,606	\$66,880	\$ 147,726	68.8%	65.50
2210	Improvement of Instruction Services	555,279	\$343,977	\$ 211,302	38.1%	43.60
2220	Educational Media Services	337,578	\$132,941	\$ 204,637	60.6%	62.14
2230	Assessment and Testing	45,000	\$38,688	\$ 6,313	14.0%	14.44
2310	Board of Education Services	192,150	\$74,802	\$ 117,348	61.1%	64.81
2320	Executive Administration Services	376,138	\$187,237	\$ 188,901	50.2%	50.47
2330	Special Area Administrative Services	189,270	\$99,929	\$ 89,341	47.2%	52.82
236X	Insurances	151,510	\$66,739	\$ 84,771	56.0%	42.74
2410	Office of Principal Services	1,526,906	\$789,631	\$ 737,275	48.3%	54.11
2510	Direction of Business Support Services	271,543	\$142,128	\$ 129,415	47.7%	48.63
2520	Fiscal Services	309,999	\$76,081	\$ 233,918	75.5%	55.30
2530	Construction Services	4,000,000	\$2,994,434	\$ 1,005,566	25.1%	82.28
2540	O&M of Plant Services	2,054,040	\$1,043,355	\$ 1,010,685	49.2%	53.04
2550	Pupil Transportation Services	733,100	\$338,072	\$ 395,028	53.9%	77.91
2560	Food Services	231,000	\$92,054	\$ 138,946	60.1%	71.27
2570	Internal Services	42,200	\$9,066	\$ 33,134	78.5%	52.62
2620	Research and Development	20,000	\$15,944	\$ 4,056	20.3%	100.00
2630	Information Services (Public Relations)	22,000	\$10,975	\$ 11,025	50.1%	68.92
2640	Staff Services (Human Resources)	171,840	\$99,147	\$ 72,693	42.3%	51.27
2660	Data Processing Services (Technology)	1,063,471	\$580,471	\$ 483,000	45.4%	46.36
3000	Child Care Services	295,098	\$139,309	\$ 155,789	52.8%	55.76
4120	Payments for Special Education Programs	440,840	\$142,950	\$ 297,890	67.6%	78.15
5XXX	Debt Services	668,202	\$596,042	\$ 72,160	10.8%	23.46
Total		\$ 30,477,135	\$14,445,088	\$ 16,032,047	52.6%	62%

Mount Prospect School District 57

Cash and Investment Summary

December 2019

Board Accounts

Bank	Description	Ending Balance
Various	Investments per Treasurer's Report	\$ 14,279,298
Huntington Bank	Imprest Account	\$ 5,000
Illinois National	E-Pay Settlement Account	\$ 4,541
Huntington Bank	Board Account	\$ 378,057
Huntington Bank	Payroll Account	\$ -
	Total	<u>\$ 14,666,896</u>

Activity Account

Bank	Description	Ending Balance
Huntington Bank	Activity Account	\$ 60,871
	Total	<u>\$ 60,871</u>

Mount Prospect School District 57

Payroll Ratification December 2019

	<u>Fund</u>		<u>Amounts</u>
Salaries	Educational		\$ 689,296
	Operations & Maintenance		\$ 168,173
	12/11/2019	Salary	\$ 857,469
Benefits	Educational		\$ 33,074
	Operations & Maintenance		\$ 5,318
	Municipal Retirement/Social Security		\$ 32,967
	12/11/2019	Benefits	\$ 71,359
	12/11/2019	Total	\$ 928,828
Salaries	Educational		\$ 683,674
	Operations & Maintenance		\$ 162,607
	12/20/2019	Salary	\$ 846,281
Benefits	Educational		\$ 29,163
	Operations & Maintenance		\$ 5,798
	Municipal Retirement/Social Security		\$ 32,213
	12/20/2019	Benefits	\$ 67,174
	12/20/2019	Total	\$ 913,455
Payroll Total			\$ 1,842,282

Mount Prospect School District 57

Accounts Payable Ratification

December 2019

<u>Fund</u>	<u>Amounts</u>
Educational	\$ 257,095.16
Operations & Maintenance	\$ 94,502.86
Debt Services	\$ 8,116.30
Transportation	\$96,559.79
Municipal Retirement/Social Security	\$ -
Capital Projects	\$ -
Working Cash	\$ -
Tort	
Fire Prevention & Safety	
Accounts Payable Total	<u><u>\$ 456,274.11</u></u>

MOUNT PROSPECT SCHOOL DISTRICT 57

**Accounts Payable Bills
January 23, 2020**

In accordance with Board Policy 4:50 Operational Services–Payment Procedures, this order authorizes administration to pay the following accounts payable bills totaling \$651,449.73 (including imprest account) as approved at the Board of Education meeting held on the date referenced above.

Reviewed by: _____
Board of Education Member

Approved by: _____
Board of Education President

Attested by: _____
Board of Education Secretary

CHECK NUMBER	CHECK DATE	VENDOR	INVOICE NUMBER	ACCOUNT LEVEL DESCRIPTION	AMOUNT
552237	01/10/2020	ACRES GROUP	AEI_035123	O&M-LANSDCAPING SERVICES	800.00
552237	01/10/2020	ACRES GROUP	AEI_035864	O&M-CONTRACT SRVCS	655.00
552237	01/10/2020	ACRES GROUP	AEI_035864	O&M-CONTRACT SRVCS	2,016.00
552238	01/10/2020	ACS FILTERS & SERVIC	183580	O&M-HVAC SUPPLIES	55.80
552239	01/10/2020	ALARM DETECTION SYST	SI-518639	O&M-SECURITY SERVICES	10.50
552239	01/10/2020	ALARM DETECTION SYST	SI-518950	O&M-SECURITY SERVICES	10.50
552239	01/10/2020	ALARM DETECTION SYST	SI-519227	O&M-SECURITY SERVICES	10.50
552239	01/10/2020	ALARM DETECTION SYST	SI-519191	O&M-SECURITY SERVICES	10.50
552240	01/10/2020	ALEXIAN BROTHERS COR	695600	HR-CONTRACT SRVCS	105.00
552241	01/10/2020	ALPHA PRIME COMMUNIC	116566	REG-SUPPLIES LP	160.00
552242	01/10/2020	ANDERSON ELEVATOR CO	INV-22252-	O&M-ELEVATOR/LIFT SERVICES	567.00
552243	01/10/2020	ARAMARK UNIFORM SERV	1/10/2020	O&M-MOP/TOWEL/MAT RENTALS	4,500.00
552244	01/10/2020	ARLINGTON HEIGHTS SC	NOVEMBER-1	SP ED-SUPPLIES	548.00
552244	01/10/2020	ARLINGTON HEIGHTS SC	NOVEMBER-1	FOOD SVCS-LUNCHES	1,680.84
552244	01/10/2020	ARLINGTON HEIGHTS SC	NOVEMBER-1	KC-SUPPLIES FV	375.00
552244	01/10/2020	ARLINGTON HEIGHTS SC	NOVEMBER-1	KC-SUPPLIES LP	467.50
552244	01/10/2020	ARLINGTON HEIGHTS SC	NOVEMBER-1	KC-SUPPLIES WB	202.50
552244	01/10/2020	ARLINGTON HEIGHTS SC	NOVEMBER-1	FOOD SVCS- FOOD PROCESSING	13,757.21
552245	01/10/2020	CAPTUREPOINT	SI-01416	KIDS CORNER-PURCH SERVICES	6,245.00
552246	01/10/2020	CLANCY, JIM	1/9/2020	ISCHOLASTIC-ATHLETIC CONT SVRC	75.00
552247	01/10/2020	COMPASS EDUCATIONAL	5250	SP SVCS-CONTRACT SRVCS	864.96
552247	01/10/2020	COMPASS EDUCATIONAL	5420	SP SVCS-CONTRACT SRVCS	864.96
552248	01/10/2020	DOOR SYSTEMS INC. KO	877241	O&M-BUILDING SUPPLIES	515.69
552249	01/10/2020	FIRST STUDENT INC.	11638887	TRANS-SP ED OUT-OF-DIST ROUTES	61,110.15
552249	01/10/2020	FIRST STUDENT INC.	BATCH 1	TRANS-ATHLETIC TRIPS	198.11
552249	01/10/2020	FIRST STUDENT INC.	BATCH 2	TRANS-ESY ROUTES	13,378.95
552249	01/10/2020	FIRST STUDENT INC.	BATCH 3	TRANS-DAILY ROUTES	27,654.33
552249	01/10/2020	FIRST STUDENT INC.	BATCH 4	TRANS-FIELD TRIPS	10,255.00
552249	01/10/2020	FIRST STUDENT INC.	BATCH 4	TRANS-PERFORMING ARTS	871.00
552249	01/10/2020	FIRST STUDENT INC.	BATCH 4	TRANS-SP ED CBI TRIPS	521.00
552250	01/10/2020	GARAVENTA USA INC	51860	O&M-ELEVATOR/LIFT SERVICES	309.75
552251	01/10/2020	GARMS, THOMAS	1/9/2020	ISCHOLASTIC-ATHLETIC CONT SVRC	75.00
552252	01/10/2020	GENERAL MECHANICAL	SI2087379	O&M-HVAC SERVICE CALLS	516.00
552252	01/10/2020	GENERAL MECHANICAL	SI2087380	O&M-HVAC SERVICE CALLS	1,616.50
552252	01/10/2020	GENERAL MECHANICAL	SI2087143	O&M-HVAC SERVICE CALLS	587.00
552252	01/10/2020	GENERAL MECHANICAL	SI2087144	O&M-HVAC SERVICE CALLS	516.00
552252	01/10/2020	GENERAL MECHANICAL	SI2087513	O&M-HVAC SERVICE CALLS	925.95
552252	01/10/2020	GENERAL MECHANICAL	SI2087751	O&M-HVAC SERVICE CALLS	835.50
552252	01/10/2020	GENERAL MECHANICAL	SI2087761	O&M-HVAC SERVICE CALLS	445.00
552252	01/10/2020	GENERAL MECHANICAL	SI2087916	O&M-HVAC SERVICE CALLS	1,136.22
552252	01/10/2020	GENERAL MECHANICAL	SI2088010	O&M-HVAC SERVICE CALLS	1,137.36
552252	01/10/2020	GENERAL MECHANICAL	SI2088030	O&M-HVAC CONTRACTS	1,044.00
552252	01/10/2020	GENERAL MECHANICAL	SI2088031	O&M-HVAC CONTRACTS	3,762.00
552252	01/10/2020	GENERAL MECHANICAL	SI2088029	O&M-HVAC CONTRACTS	7,596.00
552252	01/10/2020	GENERAL MECHANICAL	SI2088033	O&M-HVAC CONTRACTS	4,968.00
552252	01/10/2020	GENERAL MECHANICAL	SI2088032	O&M-HVAC CONTRACTS	3,762.00
552253	01/10/2020	GREEN ASSOCIATES INC	2020168	CAPITAL IMPROVEMENTS	15,589.29
552253	01/10/2020	GREEN ASSOCIATES INC	2020159	BOE-CONTRACTED SERVICES	2,022.50
552253	01/10/2020	GREEN ASSOCIATES INC	2020199	BOE-CONTRACTED SERVICES	106.25
552253	01/10/2020	GREEN ASSOCIATES INC	2020184	CAPITAL IMPROVEMENTS	17,509.60
552254	01/10/2020	H.R. BOYD, INC.	200034546	O&M-SNOW REMOVAL SERVICES	801.00
552254	01/10/2020	H.R. BOYD, INC.	200034568	O&M-SNOW REMOVAL SERVICES	801.00
552255	01/10/2020	HARFORD, MICHELLE	12/16/2019	PR-CONTRACT SRVCS	280.00
552256	01/10/2020	HEARTLAND BUSINESS S	348901-H	TECH-DISTRICT LICENSES	1,670.00
552257	01/10/2020	HOLMES JUNIOR HIGH	1/8/20	ISCHOLASTIC-ATHLETIC CONT SVRC	125.00
552257	01/10/2020	HOLMES JUNIOR HIGH	1/9/2020	ISCHOLASTIC-ATHLETIC CONT SVRC	250.00

CHECK NUMBER	CHECK DATE	VENDOR	INVOICE NUMBER	ACCOUNT LEVEL DESCRIPTION	AMOUNT
552258	01/10/2020	HOUGHTON MIFFLIN HAR	911284058	REG-SUPPLIES FV	15,368.79
552259	01/10/2020	INTEGRATED SYSTEMS C	0704594	FISCAL SVCS-CONTRACTED SVCS	630.00
552259	01/10/2020	INTEGRATED SYSTEMS C	0703952	FISCAL SVCS-CONTRACTED SVCS	630.00
552260	01/10/2020	JOHNSON CONTROLS	86418061	O&M-INTERCOM/CLOCK SERVICES	753.62
552260	01/10/2020	JOHNSON CONTROLS	21324291	O&M-FIRE PROTECTION SERVICES	819.25
552260	01/10/2020	JOHNSON CONTROLS	21347117	O&M-FIRE PROTECTION SERVICES	159.75
552260	01/10/2020	JOHNSON CONTROLS	86447397	O&M-FIRE PROTECTION SERVICES	1,720.00
552260	01/10/2020	JOHNSON CONTROLS	21347116	O&M-FIRE PROTECTION SERVICES	292.34
552261	01/10/2020	JOURNAL & TOPICS NEW	182377	FISCAL SVCS-CONTRACTED SVCS	285.00
552261	01/10/2020	JOURNAL & TOPICS NEW	182378	FISCAL SVCS-CONTRACTED SVCS	1,000.00
552262	01/10/2020	KUSTRA-QUINN, JENNY	DECEMBER 2	PR-CONTRACT SRVCS	2,991.00
552263	01/10/2020	LADD, ANN	1/9/2020	ISCHOLASTIC-ATHLETIC CONT SVRC	75.00
552264	01/10/2020	LANGUAGE LINE SERVIC	4719329	BILINGUAL-CONTRACT SVRCS	49.00
552265	01/10/2020	MCGUIRE, MIKE	1/9/2020	ISCHOLASTIC-ATHLETIC CONT SVRC	75.00
552266	01/10/2020	MEDISCAN STAFFING SE	804-261759	SPEECH-CERT SALARIES	1,332.00
552266	01/10/2020	MEDISCAN STAFFING SE	804-262070	SPEECH-CERT SALARIES	2,220.00
552266	01/10/2020	MEDISCAN STAFFING SE	804-262292	SPEECH-CERT SALARIES	2,220.00
552267	01/10/2020	MIDLAND PAPER COMPAN	IN01242853	REG-SUPPLIES LP	2,280.75
552267	01/10/2020	MIDLAND PAPER COMPAN	IN01242867	REG-SUPPLIES WB	2,493.62
552267	01/10/2020	MIDLAND PAPER COMPAN	IN01242861	REG-SUPPLIES FV	4,257.40
552268	01/10/2020	NASCO	487885	REG-SUPPLIES LN	136.00
552269	01/10/2020	NATIONAL INVESTIGATI	RI-19-755S	SUPT-CONTRACT SRVS (RESIDENCY)	301.25
552270	01/10/2020	NEW HOPE ACADEMY	1219W33	TRANS-SP ED OUT-OF-DIST ROUTES	3,242.85
552271	01/10/2020	NICHOLAS & ASSOCIATE	5959	CAPITAL IMPROVEMENTS	174,913.00
552272	01/10/2020	NORTHWEST ELECTRICAL	17450147	O&M-BUILDING SUPPLIES	218.00
552273	01/10/2020	NORTHWEST COMMUNITY	N-57-24	SP ED-HOME/HOSPITAL TUTORS	529.20
552274	01/10/2020	OMNI GROUP	2001-7202	FISCAL SVCS-CONTRACTED SVCS	222.50
552275	01/10/2020	PROSPECT ELECTRIC CO	3589-151	O&M-BUILDING SUPPLIES	5,050.00
552275	01/10/2020	PROSPECT ELECTRIC CO	3589-160	O&M-ELECTRICAL SERVICES	994.14
552275	01/10/2020	PROSPECT ELECTRIC CO	3589-156	O&M-ELECTRICAL SERVICES	331.47
552275	01/10/2020	PROSPECT ELECTRIC CO	3589-161	O&M-ELECTRICAL SERVICES	339.47
552275	01/10/2020	PROSPECT ELECTRIC CO	35891017	O&M-ELECTRICAL SERVICES	1,303.16
552275	01/10/2020	PROSPECT ELECTRIC CO	3589-149	O&M-ELECTRICAL SERVICES	372.62
552275	01/10/2020	PROSPECT ELECTRIC CO	3589-159	O&M-ELECTRICAL SERVICES	204.00
552275	01/10/2020	PROSPECT ELECTRIC CO	3589-158	O&M-ELECTRICAL SERVICES	102.00
552275	01/10/2020	PROSPECT ELECTRIC CO	3589-157	O&M-ELECTRICAL SERVICES	204.00
552275	01/10/2020	PROSPECT ELECTRIC CO	3589-155	O&M-ELECTRICAL SERVICES	207.56
552276	01/10/2020	SABATELLO TREE CARE	13241	O&M-LANSDCAPING SERVICES	850.00
552277	01/10/2020	SCARIANO HIMES & PET	42909	BOE-LEGAL SERVICES	667.50
552278	01/10/2020	SCHOOL PERCEPTIONS	3742	R&D-CONTRACT SRVCS	721.00
552279	01/10/2020	SCHURING & SCHURING	WESTBROOK	FOOD SVCS-MILK	487.63
552279	01/10/2020	SCHURING & SCHURING	FAIRVIEW M	FOOD SVCS-MILK	992.75
552279	01/10/2020	SCHURING & SCHURING	LIONS PARK	FOOD SVCS-MILK	869.58
552280	01/10/2020	SHAFFER, STEVEN	1/9/2020	ISCHOLASTIC-ATHLETIC CONT SVRC	164.54
552281	01/10/2020	SOUND INCORPORATED	R165680	O&M-CONTRACT SRVCS	546.00
552281	01/10/2020	SOUND INCORPORATED	R165692	O&M-CONTRACT SRVCS	1,500.00
552281	01/10/2020	SOUND INCORPORATED	R165690	O&M-CONTRACT SRVCS	1,500.00
552282	01/10/2020	SOUTH MIDDLE SCHOOL	1/10/20	ISCHOLASTIC-ATHLETIC CONT SVRC	300.00
552283	01/10/2020	SOUTH SIDE CONTROL S	S100592656	O&M-HVAC SUPPLIES	140.95
552283	01/10/2020	SOUTH SIDE CONTROL S	S100593057	O&M-HVAC SUPPLIES	418.13
552283	01/10/2020	SOUTH SIDE CONTROL S	S100594660	O&M-HVAC SUPPLIES	498.73
552283	01/10/2020	SOUTH SIDE CONTROL S	S100593106	O&M-HVAC SUPPLIES	112.50
552284	01/10/2020	STUTTERING THERAPY R	T9F1P21	SP ED-SUPPLIES	351.10
552285	01/10/2020	SUBURBAN SCHOOL COOP	12/31/2019	LIAB/PROPERTY INSURANCE	89,304.00
552286	01/10/2020	TEACHERS CURRICULUM	INV55483-1	REG-SUPPLIES LP	1,984.50
552287	01/10/2020	TFW INC.	99445	CAPITAL IMPROVEMENTS	975.00

CHECK CHECK			INVOICE	ACCOUNT LEVEL	
NUMBER	DATE	VENDOR	NUMBER	DESCRIPTION	AMOUNT
552287	01/10/2020	TFW INC.	99550	CAPITAL IMPROVEMENTS	975.00
552287	01/10/2020	TFW INC.	99551	CAPITAL IMPROVEMENTS	500.00
552288	01/10/2020	VETERANS FLOORS INC	1573	O&M-BUILDING SUPPLIES	260.00
552289	01/10/2020	WAREHOUSE DIRECT		0.00	
552290	01/10/2020	WAREHOUSE DIRECT	4385917-1	O&M-CLEANING SUPPLIES FV	977.17
552290	01/10/2020	WAREHOUSE DIRECT	4388051-0	O&M-CLEANING SUPPLIES FV	198.78
552290	01/10/2020	WAREHOUSE DIRECT	4387798-0	O&M-CLEANING SUPPLIES FV	168.25
552290	01/10/2020	WAREHOUSE DIRECT	4387431-0	O&M-CLEANING SUPPLIES FV	1,579.05
552290	01/10/2020	WAREHOUSE DIRECT	4387372-0	O&M-CLEANING SUPPLIES LP	51.00
552290	01/10/2020	WAREHOUSE DIRECT	4534075-0	O&M-CLEANING SUPPLIES-ADM	30.84
552290	01/10/2020	WAREHOUSE DIRECT	4534122-0	FISCAL SVCS-SUPPLIES	83.48
552290	01/10/2020	WAREHOUSE DIRECT	4497059-0	REG-SUPPLIES LN	588.72
552290	01/10/2020	WAREHOUSE DIRECT	4498016-0	O&M-UNIFORMS	6,068.08
552290	01/10/2020	WAREHOUSE DIRECT	IN341117	O&M-EQUIPMENT REPAIR	215.87
552290	01/10/2020	WAREHOUSE DIRECT	C4509760-0	REG-SUPPLIES LN	-97.28
552290	01/10/2020	WAREHOUSE DIRECT	4509760-0	REG-SUPPLIES LN	121.60
552290	01/10/2020	WAREHOUSE DIRECT	C4492410-0	PNPL SVCS-SUPPLIES LN	-29.70
552290	01/10/2020	WAREHOUSE DIRECT	4494008-0	PNPL SVCS-SUPPLIES LN	29.70
552290	01/10/2020	WAREHOUSE DIRECT	C4475736-0	O&M-CLEANING SUPPLIES LP	-141.00
552290	01/10/2020	WAREHOUSE DIRECT	4515299-0	O&M-CLEANING SUPPLIES FV	3,112.62
552290	01/10/2020	WAREHOUSE DIRECT	4517150-0	O&M-CLEANING SUPPLIES LP	1,853.12
552290	01/10/2020	WAREHOUSE DIRECT	4523833-0	O&M-CLEANING SUPPLIES LN	1,801.91
552290	01/10/2020	WAREHOUSE DIRECT	4512215-0	O&M-EQUIPMENT	5,895.00
552290	01/10/2020	WAREHOUSE DIRECT	4512215-1	O&M-EQUIPMENT	5,895.00
552290	01/10/2020	WAREHOUSE DIRECT	4515820-0	O&M-CLEANING SUPPLIES LN	32.40
552290	01/10/2020	WAREHOUSE DIRECT	4516083-0	O&M-CLEANING SUPPLIES LN	9.36
552290	01/10/2020	WAREHOUSE DIRECT	C4517150-0	O&M-CLEANING SUPPLIES LP	-96.06
552290	01/10/2020	WAREHOUSE DIRECT	C4498806-0	O&M-CLEANING SUPPLIES LN	-18.50
552291	01/10/2020	WAYTULA, JOSEPH	1/9/2020	ISCHOLASTIC-ATHLETIC CONT SVRC	75.00
552292	01/10/2020	WINTERS, KATHY	1/9/2020	C&I-DUES & FEES WB	50.00
552293	01/10/2020	WORLD BOOK, INC.	1/8/2020	REG-SOFTWARE LICENSES C&I	1,672.86
552294	01/10/2020	ZINN, MICHAEL	1/9/2020	ISCHOLASTIC-ATHLETIC CONT SVRC	75.00
Totals for checks					579,517.84

FUND SUMMARY

<u>FUND</u>	<u>DESCRIPTION</u>	<u>BALANCE SHEET</u>	<u>REVENUE</u>	<u>EXPENSE</u>	<u>TOTAL</u>
10	EDUCATIONAL FUND	0.00	0.00	165,383.21	165,383.21
20	OPERATIONS & MAINTENANCE FUND	0.00	0.00	86,441.35	86,441.35
40	TRANSPORTATION FUND	0.00	0.00	117,231.39	117,231.39
60	CAPITAL PROJECTS FUND	0.00	0.00	210,461.89	210,461.89
***	Fund Summary Totals ***	0.00	0.00	579,517.84	579,517.84

***** End of report *****

CHECK NUMBER	CHECK DATE	VENDOR	INVOICE NUMBER	ACCOUNT LEVEL DESCRIPTION	AMOUNT
552222	12/20/2019	MASTERCARD CORPORATE	0701535-19	SP ED-SUPPLIES	93.35
552222	12/20/2019	MASTERCARD CORPORATE	0701535-19	SP SVCS-IN DIST MEETINGS	10.12
552222	12/20/2019	MASTERCARD CORPORATE	0701535-19	SP ED-SUPPLIES	168.97
552222	12/20/2019	MASTERCARD CORPORATE	0701535-19	SP ED-PROF DVLPMT	59.98
552222	12/20/2019	MASTERCARD CORPORATE	0701535-19	SP SVCS-IN DIST MEETINGS	19.99
552222	12/20/2019	MASTERCARD CORPORATE	0701535-19	SP SVCS-IN DIST MEETINGS	11.97
552222	12/20/2019	MASTERCARD CORPORATE	0701535-19	SP ED-SUPPLIES	15.00
552222	12/20/2019	MASTERCARD CORPORATE	0701535-19	REG-SUPPLIES LP	198.76
552222	12/20/2019	MASTERCARD CORPORATE	0701535-19	REG-SUPPLIES LP	46.55
552222	12/20/2019	MASTERCARD CORPORATE	0701535-19	REG-SUPPLIES LP	133.89
552222	12/20/2019	MASTERCARD CORPORATE	0701535-19	REG-SUPPLIES LP	80.98
552222	12/20/2019	MASTERCARD CORPORATE	0701535-19	REG-SUPPLIES LP	18.13
552222	12/20/2019	MASTERCARD CORPORATE	0701535-19	LP CLEARING ACCT-AP LIAB	136.80
552222	12/20/2019	MASTERCARD CORPORATE	0701535-19	REG-SUPPLIES WB	133.00
552222	12/20/2019	MASTERCARD CORPORATE	0701535-19	WB CLEARING ACCT-AP LIAB	175.00
552222	12/20/2019	MASTERCARD CORPORATE	0701535-19	WB CLEARING ACCT-AP LIAB	95.87
552222	12/20/2019	MASTERCARD CORPORATE	0701535-19	REG-SUPPLIES WB	45.98
552222	12/20/2019	MASTERCARD CORPORATE	0701535-19	REG-SUPPLIES WB	40.24
552222	12/20/2019	MASTERCARD CORPORATE	0701535-19	REG-SUPPLIES WB	3.99
552222	12/20/2019	MASTERCARD CORPORATE	0701535-19	REG-SUPPLIES WB	198.38
552222	12/20/2019	MASTERCARD CORPORATE	0701535-19	REG-SUPPLIES WB	198.54
552222	12/20/2019	MASTERCARD CORPORATE	0701535-19	C&I-SUPPLIES	50.99
552222	12/20/2019	MASTERCARD CORPORATE	0701535-19	C&I-SUPPLIES	22.59
552222	12/20/2019	MASTERCARD CORPORATE	0701535-19	C&I-IN DISTRICT MEETINGS	13.85
552222	12/20/2019	MASTERCARD CORPORATE	0701535-19	BILINGUAL-PROF DVLPMT	150.00
552222	12/20/2019	MASTERCARD CORPORATE	0701535-19	C&I-PURCHASED SVCS TITLE I	35.00
552222	12/20/2019	MASTERCARD CORPORATE	0701535-19	BILINGUAL-PROF DVLPMT	150.00
552222	12/20/2019	MASTERCARD CORPORATE	0701535-19	BILINGUAL-PROF DVLPMT	150.00
552222	12/20/2019	MASTERCARD CORPORATE	0701535-19	C&I-IN DISTRICT MEETINGS	106.83
552222	12/20/2019	MASTERCARD CORPORATE	0701535-19	O&M-BUILDING SUPPLIES	19.90
552222	12/20/2019	MASTERCARD CORPORATE	0701535-19	O&M-BUILDING SUPPLIES	37.61
552222	12/20/2019	MASTERCARD CORPORATE	0701535-19	O&M-BUILDING SUPPLIES	27.18
552222	12/20/2019	MASTERCARD CORPORATE	0701535-19	O&M-BUILDING SUPPLIES	87.94
552222	12/20/2019	MASTERCARD CORPORATE	0701535-19	O&M-BUILDING SUPPLIES	-29.98
552222	12/20/2019	MASTERCARD CORPORATE	0701535-19	O&M-BUILDING SUPPLIES	29.98
552222	12/20/2019	MASTERCARD CORPORATE	0701535-19	O&M-BUILDING SUPPLIES	49.97
552222	12/20/2019	MASTERCARD CORPORATE	0701535-19	O&M-BUILDING SUPPLIES	15.79
552222	12/20/2019	MASTERCARD CORPORATE	0701535-19	O&M-BUILDING SUPPLIES	40.42
552222	12/20/2019	MASTERCARD CORPORATE	0701535-19	O&M-BUILDING SUPPLIES	75.50
552222	12/20/2019	MASTERCARD CORPORATE	0701535-19	O&M-BUILDING SUPPLIES	17.59
552222	12/20/2019	MASTERCARD CORPORATE	0701535-19	O&M-BUILDING SUPPLIES	111.49
552222	12/20/2019	MASTERCARD CORPORATE	0701535-19	O&M-BUILDING SUPPLIES	29.58
552222	12/20/2019	MASTERCARD CORPORATE	0701535-19	O&M-BUILDING SUPPLIES	64.85
552222	12/20/2019	MASTERCARD CORPORATE	0701535-19	REG-SUPPLIES FV	143.92
552222	12/20/2019	MASTERCARD CORPORATE	0701535-19	REG-SUPPLIES LP	143.92
552222	12/20/2019	MASTERCARD CORPORATE	0701535-19	REG-SUPPLIES FV	180.25
552222	12/20/2019	MASTERCARD CORPORATE	0701535-19	REG-SUPPLIES WB	52.78
552222	12/20/2019	MASTERCARD CORPORATE	0701535-19	C&I-PROF DVLPMT LN	59.00
552222	12/20/2019	MASTERCARD CORPORATE	0701535-19	REG-SUPPLIES LN	24.07
552222	12/20/2019	MASTERCARD CORPORATE	0701535-19	LN CLEARING ACCT-AP LIAB	74.83
552222	12/20/2019	MASTERCARD CORPORATE	0701535-19	LRC-SUPPLIES LN	6.67
552222	12/20/2019	MASTERCARD CORPORATE	0701535-19	LRC-SUPPLIES LN	5.47
552222	12/20/2019	MASTERCARD CORPORATE	0701535-19	C&I-PROF DVLPMT LN	125.00
552222	12/20/2019	MASTERCARD CORPORATE	0701535-19	LN CLEARING ACCT-AP LIAB	5.98
552222	12/20/2019	MASTERCARD CORPORATE	0701535-19	LRC-SUPPLIES LN	77.58
552222	12/20/2019	MASTERCARD CORPORATE	0701535-19	LRC-SUPPLIES LN	36.98

CHECK NUMBER	CHECK DATE	VENDOR	INVOICE NUMBER	ACCOUNT LEVEL DESCRIPTION	AMOUNT
552222	12/20/2019	MASTERCARD CORPORATE	0701535-19	REG-SUPPLIES LN	20.83
552222	12/20/2019	MASTERCARD CORPORATE	0701535-19	LRC-SUPPLIES LN	183.14
552222	12/20/2019	MASTERCARD CORPORATE	0701535-19	LN CLEARING ACCT-AP LIAB	63.25
552222	12/20/2019	MASTERCARD CORPORATE	0701535-19	REG-SUPPLIES LN	22.51
552222	12/20/2019	MASTERCARD CORPORATE	0701535-19	PNPL SVCS-IN DIST MEETINGS FV	49.42
552222	12/20/2019	MASTERCARD CORPORATE	0701535-19	PNPL SVCS-SUPPLIES FV	149.00
552222	12/20/2019	MASTERCARD CORPORATE	0701535-19	FV CLEARING ACCT-AP LIAB	199.00
552222	12/20/2019	MASTERCARD CORPORATE	0701535-19	REG-SUPPLIES FV	33.96
552222	12/20/2019	MASTERCARD CORPORATE	0701535-19	SUPT-DUES & FEES	-250.00
552222	12/20/2019	MASTERCARD CORPORATE	0701535-19	BOE-PROF DVLPMT	185.02
552222	12/20/2019	MASTERCARD CORPORATE	0701535-19	SUPT-DUES & FEES	200.00
552222	12/20/2019	MASTERCARD CORPORATE	0701535-19	PNPL SVCS-IN DIST MEETINGS LP	61.88
552222	12/20/2019	MASTERCARD CORPORATE	0701535-19	REG-SUPPLIES LP	24.96
552222	12/20/2019	MASTERCARD CORPORATE	0701535-19	REG-SUPPLIES LP	181.80
552222	12/20/2019	MASTERCARD CORPORATE	0701535-19	REG-SUPPLIES LP	23.16
552222	12/20/2019	MASTERCARD CORPORATE	0701535-19	LP CLEARING ACCT-AP LIAB	49.43
552222	12/20/2019	MASTERCARD CORPORATE	0701535-19	REG-SUPPLIES LP	72.28
552222	12/20/2019	MASTERCARD CORPORATE	0701535-19	LP CLEARING ACCT-AP LIAB	22.32
552222	12/20/2019	MASTERCARD CORPORATE	0701535-19	REG-SUPPLIES LP	43.36
552222	12/20/2019	MASTERCARD CORPORATE	0701535-19	REG-SUPPLIES LP	5.70
552222	12/20/2019	MASTERCARD CORPORATE	0701535-19	REG-SUPPLIES LP	7.18
552222	12/20/2019	MASTERCARD CORPORATE	0701535-19	REG-SUPPLIES LP	109.95
552222	12/20/2019	MASTERCARD CORPORATE	0701535-19	REG-SUPPLIES LP	15.36
552222	12/20/2019	MASTERCARD CORPORATE	0701535-19	TECH-PROF DVLPMT	350.00
552222	12/20/2019	MASTERCARD CORPORATE	0701535-19	TECH-N/C EQUIPMENT	199.99
552222	12/20/2019	MASTERCARD CORPORATE	0701535-19	TECH-N/C EQUIPMENT	129.95
552222	12/20/2019	MASTERCARD CORPORATE	0701535-19	TECH-N/C EQUIPMENT	249.00
552222	12/20/2019	MASTERCARD CORPORATE	0701535-19	TECH-PROF DVLPMT	48.75
552222	12/20/2019	MASTERCARD CORPORATE	0701535-19	TECH-PROF DVLPMT	30.00
552222	12/20/2019	MASTERCARD CORPORATE	0701535-19	TECH-PROF DVLPMT	436.22
552222	12/20/2019	MASTERCARD CORPORATE	0701535-19	TECH-PROF DVLPMT	47.00
552222	12/20/2019	MASTERCARD CORPORATE	0701535-19	TECH-SUPPLIES	16.89
552222	12/20/2019	MASTERCARD CORPORATE	0701535-19	TECH-DISTRICT LICENSES	52.80
552222	12/20/2019	MASTERCARD CORPORATE	0701535-19	TECH-SUPPLIES	12.99
552222	12/20/2019	MASTERCARD CORPORATE	0701535-19	TECH-SUPPLIES	109.62
552222	12/20/2019	MASTERCARD CORPORATE	0701535-19	TECH-SUPPLIES	19.71
552222	12/20/2019	MASTERCARD CORPORATE	0701535-19	TECH-SUPPLIES	300.98
552222	12/20/2019	MASTERCARD CORPORATE	0701535-19	TECH-N/C EQUIPMENT	241.32
552222	12/20/2019	MASTERCARD CORPORATE	0701535-19	TECH-PROF DVLPMT	225.00
552222	12/20/2019	MASTERCARD CORPORATE	0701535-19	TECH-N/C EQUIPMENT	29.00
552222	12/20/2019	MASTERCARD CORPORATE	0701535-19	TECH-N/C EQUIPMENT	500.00
552222	12/20/2019	MASTERCARD CORPORATE	0701535-19	TECH-SUPPLIES	5.29
552222	12/20/2019	MASTERCARD CORPORATE	0701535-19	TECH-SUPPLIES	29.97
552222	12/20/2019	MASTERCARD CORPORATE	0701535-19	C&I-PROF DVLPMT LN	125.00
552222	12/20/2019	MASTERCARD CORPORATE	0701535-19	C&I-PROF DVLPMT LN	125.00
552222	12/20/2019	MASTERCARD CORPORATE	0701535-19	REG-SUPPLIES LN	306.00
552222	12/20/2019	MASTERCARD CORPORATE	0701535-19	C&I-PROF DVLPMT LN	125.00
552222	12/20/2019	MASTERCARD CORPORATE	0701535-19	PNPL SVCS-SUPPLIES LN	35.83
552222	12/20/2019	MASTERCARD CORPORATE	0701535-19	REG-SUPPLIES LN	25.56
552222	12/20/2019	MASTERCARD CORPORATE	0701535-19	PNPL SVCS-DUES & FEES LN	399.00
552222	12/20/2019	MASTERCARD CORPORATE	0701535-19	O&M-BUILDING SUPPLIES	241.31
552222	12/20/2019	MASTERCARD CORPORATE	0701535-19	O&M-BUILDING SUPPLIES	263.49
552222	12/20/2019	MASTERCARD CORPORATE	0701535-19	C&I-PROF DVLPMT FV	279.00
552222	12/20/2019	MASTERCARD CORPORATE	0701535-19	O&M-BUILDING SUPPLIES	57.41
552222	12/20/2019	MASTERCARD CORPORATE	0701535-19	O&M-BUILDING SUPPLIES	65.81
552222	12/20/2019	MASTERCARD CORPORATE	0701535-19	C&I-SUPPLIES	79.69

CHECK NUMBER	CHECK DATE	CHECK VENDOR	INVOICE NUMBER	ACCOUNT LEVEL DESCRIPTION	AMOUNT
552222	12/20/2019	MASTERCARD CORPORATE	0701535-19	O&M-BUILDING SUPPLIES	111.79
552222	12/20/2019	MASTERCARD CORPORATE	0701535-19	SPEECH-PROF DVLPMT	255.00
552222	12/20/2019	MASTERCARD CORPORATE	0701535-19	O&M-BUILDING SUPPLIES	75.89
552222	12/20/2019	MASTERCARD CORPORATE	0701535-19	TECH-PROF DVLPMT	225.00
552222	12/20/2019	MASTERCARD CORPORATE	0701535-19	O&M-BUILDING SUPPLIES	213.76
552222	12/20/2019	MASTERCARD CORPORATE	0701535-19	C&I-PROFESSIONAL DEVELOPMENT	250.00
552222	12/20/2019	MASTERCARD CORPORATE	0701535-19	INTL SVCS-POSTAGE	49.95
552222	12/20/2019	MASTERCARD CORPORATE	0701535-19	O&M-BUILDING SUPPLIES	127.19
552222	12/20/2019	MASTERCARD CORPORATE	0701535-19	C&I-PROF DVLPMT FV	279.00
552222	12/20/2019	MASTERCARD CORPORATE	0701535-19	C&I-PROF DVLPMT FV	279.00
552222	12/20/2019	MASTERCARD CORPORATE	0701535-19	C&I-PROF DVLPMT FV	279.00
552222	12/20/2019	MASTERCARD CORPORATE	0701535-19	REG-SUPPLIES LP	219.90
552222	12/20/2019	MASTERCARD CORPORATE	0701535-19	O&M-BUILDING SUPPLIES	253.00
552222	12/20/2019	MASTERCARD CORPORATE	0701535-19	O&M-BUILDING SUPPLIES	11.73
552222	12/20/2019	MASTERCARD CORPORATE	0701535-19	REG-SUPPLIES WB	89.04
552222	12/20/2019	MASTERCARD CORPORATE	0701535-19	REG-SUPPLIES WB	74.91
552222	12/20/2019	MASTERCARD CORPORATE	0701535-19	WB CLEARING ACCT-AP LIAB	175.00
552222	12/20/2019	MASTERCARD CORPORATE	0701535-19	REG-SUPPLIES WB	19.32
552222	12/20/2019	MASTERCARD CORPORATE	0701535-19	REG-SUPPLIES WB	123.44
552222	12/20/2019	MASTERCARD CORPORATE	0701535-19	REG-SUPPLIES WB	31.92
552222	12/20/2019	MASTERCARD CORPORATE	0701535-19	REG-SUPPLIES WB	66.57
552222	12/20/2019	MASTERCARD CORPORATE	0701535-19	REG-SUPPLIES WB	11.97
552222	12/20/2019	MASTERCARD CORPORATE	0701535-19	REG-SUPPLIES WB	31.79
552222	12/20/2019	MASTERCARD CORPORATE	0701535-19	REG-SUPPLIES WB	19.78
552222	12/20/2019	MASTERCARD CORPORATE	0701535-19	REG-SUPPLIES WB	23.96
Totals for 552222					14,013.02
Totals for checks					14,013.02

FUND SUMMARY

<u>FUND</u>	<u>DESCRIPTION</u>	<u>BALANCE SHEET</u>	<u>REVENUE</u>	<u>EXPENSE</u>	<u>TOTAL</u>
10	EDUCATIONAL FUND	0.00	0.00	11,016.34	11,016.34
20	OPERATIONS & MAINTENANCE FUND	0.00	0.00	1,999.20	1,999.20
99	STUDENT ACTIVITY FUND	997.48	0.00	0.00	997.48
***	Fund Summary Totals ***	997.48	0.00	13,015.54	14,013.02

***** End of report *****

CHECK CHECK			INVOICE	ACCOUNT LEVEL	
NUMBER	DATE	VENDOR	NUMBER	DESCRIPTION	AMOUNT
552223	01/03/2020	ADAMS INTERIORS LTD	3108	PNPL SVCS-SUPPLIES WB	1,740.00
552224	01/03/2020	AGATON, CHERLITA	1/2/2020	MILK SALES	54.00
552225	01/03/2020	AT&T MOBILITY	8726634222	TECH-DATA LINES	43.23
552226	01/03/2020	CALL ONE	171569	TECH-DATA LINES	5,479.83
552227	01/03/2020	CANON	20849760	COPIER LEASES	7,627.05
552228	01/03/2020	CONSTELLATION NEW EN	2777614	O&M-NATURAL GAS ADM	299.10
552228	01/03/2020	CONSTELLATION NEW EN	2777614	O&M-NATURAL GAS FV	1,856.88
552228	01/03/2020	CONSTELLATION NEW EN	2777614	O&M-NATURAL GAS LP	1,682.98
552228	01/03/2020	CONSTELLATION NEW EN	2777614	O&M-NATURAL GAS LN	1,633.82
552228	01/03/2020	CONSTELLATION NEW EN	2777614	O&M-NATURAL GAS MNT	1,540.52
552228	01/03/2020	CONSTELLATION NEW EN	2777614	O&M-NATURAL GAS WB	898.52
552230	01/03/2020	NEXTERA ENERGY (FKA	4128066305	O&M-ELECTRIC LP	5,094.66
552230	01/03/2020	NEXTERA ENERGY (FKA	4128066248	O&M-ELECTRIC ADM/FV	7,512.12
552230	01/03/2020	NEXTERA ENERGY (FKA	4128066304	O&M-ELECTRIC LN	5,256.44
552230	01/03/2020	NEXTERA ENERGY (FKA	4128066304	O&M-ELECTRIC WB	4,085.91
552231	01/03/2020	TECHNOLOGY MANAGEMEN	T2012058	TECH-CONTRACTED SERVICES	25.00
552232	01/03/2020	UNITE PRIVATE NETWOR	SI-20-0008	TECH-DATA LINES	6,495.00
552233	01/03/2020	VILLAGE OF MOUNT PRO	12/15/2019	O&M-SEWER/WATER LN	212.72
552233	01/03/2020	VILLAGE OF MOUNT PRO	12/15/2019	O&M-SEWER/WATER ADM	35.84
552233	01/03/2020	VILLAGE OF MOUNT PRO	12/15/2019	O&M-SEWER/WATER LN	9.00
552233	01/03/2020	VILLAGE OF MOUNT PRO	12/15/2019	O&M-SEWER/WATER LN	419.02
552233	01/03/2020	VILLAGE OF MOUNT PRO	12/15/2019	O&M-SEWER/WATER FV	580.48
552233	01/03/2020	VILLAGE OF MOUNT PRO	12/15/2019	O&M-SEWER/WATER WB	274.82
552233	01/03/2020	VILLAGE OF MOUNT PRO	12/15/2019	O&M-SEWER/WATER LP	555.64
552234	01/03/2020	VISUAL IMPACT	1/2/2019	REG-SUPPLIES LN	4,335.00
Totals for checks					57,747.58

FUND SUMMARY

<u>FUND</u>	<u>DESCRIPTION</u>	<u>BALANCE SHEET</u>	<u>REVENUE</u>	<u>EXPENSE</u>	<u>TOTAL</u>
10	EDUCATIONAL FUND	0.00	54.00	18,118.06	18,172.06
20	OPERATIONS & MAINTENANCE FUND	0.00	0.00	31,948.47	31,948.47
30	DEBT SERVICES FUND	0.00	0.00	7,627.05	7,627.05
***	Fund Summary Totals ***	0.00	54.00	57,693.58	57,747.58

***** End of report *****

<u>CHECK</u>	<u>CHECK</u>		<u>INVOICE</u>	<u>ACCOUNT LEVEL</u>	
<u>NUMBER</u>	<u>DATE</u>	<u>VENDOR</u>	<u>NUMBER</u>	<u>DESCRIPTION</u>	<u>AMOUNT</u>
552235	01/10/2020	CITI CARDS	DECEMBER S	INTL SVCS-SUPPLIES	79.94
552236	01/10/2020	COMED	1/6/2020	O&M-ELECTRIC MNT	91.35
Totals for checks					171.29

FUND SUMMARY

<u>FUND</u>	<u>DESCRIPTION</u>	<u>BALANCE SHEET</u>	<u>REVENUE</u>	<u>EXPENSE</u>	<u>TOTAL</u>
10	EDUCATIONAL FUND	0.00	0.00	79.94	79.94
20	OPERATIONS & MAINTENANCE FUND	0.00	0.00	91.35	91.35
***	Fund Summary Totals ***	0.00	0.00	171.29	171.29

***** End of report *****

Mount Prospect School District 57
Office of the Assistant Superintendent for Finance and Operations

TO: Dr. Elaine Aumiller, Superintendent

FROM: Adam Parisi, Assistant Superintendent for Finance and Operations/CSBO

DATE: January 23, 2020

RE: School Maintenance Grant
Policy 4:150 Facility Management and Building Programs

EXECUTIVE SUMMARY:

There is approximately \$44 million in funds available for the School Maintenance Project Grant. To apply for the funds, the Board of Education must agree that the District can match the grant with local funds up to \$50,000.

BACKGROUND AND RATIONALE:

The **School Maintenance Project Grant** is a dollar-for-dollar state matching grant program providing awards up to \$50,000 to grantees exclusively for the maintenance or upkeep of buildings or structures for educational purposes. Ongoing operational costs, including in-house labor for SMPG projects not contracted out, cannot be included for any School Maintenance Project Grant. A project may involve different types of work on a single building or structure or may involve a single type of work (e.g., new roofing or windows) on several buildings or structures. There is no limit to the cost of a project; however, grant awards shall not exceed \$50,000 per grant award, and applicants shall provide a match from local funds equal to the grant amount requested.

RECOMMENDED BOARD ACTION:

That the Board of Education approve the first round of the ISBE grant application.



MEMORANDUM

To: Members, Board of Education
 From: Elaine Aumiller
 Re: Policies Second Read
 Date: January 23, 2020

The following policies went before the Board of Education for First Read on December 19, 2019. The Board is asked to approve these policies at Second Read on January 23, 2020.

Policy #	Title	Explanation
2:20	Powers and Duties of the School Board: Indemnification	Policy and footnotes are updated in response to new legislation. Recommendation is to adopt PRESS.
2:70	Vacancies on the School Board – Filling Vacancies	Policy and footnotes are updated in response to new legislation. Recommendation is to adopt PRESS.
2:100	Board Member Conflict of Interest	Policy, Legal References, and footnotes are updated in response to federal and state grant awards. Recommendation is to adopt PRESS.
2:105	Ethics and Gift Ban	Policy and footnotes are updated in response to new legislation. Recommendation is to adopt PRESS.
2:110	Qualifications, Term and Duties of Board Officers	Policy, Legal References, and footnotes are updated in response to new legislation. Recommendation is to adopt PRESS.
2:200	Types of School Board Meetings	Policy, Legal References, and footnotes are updated in response to OMA. Recommendation is to adopt PRESS.
2:220	School Board Meeting procedure	Policy and footnotes are updated. Recommendation is to adopt PRESS.
2:250	Access to District Public Records	Policy is unchanged. Footnotes are updated in response to FOIA. Recommendation is to adopt PRESS.
2:260	Uniform Grievance Procedure	Policy and footnotes are updated. Recommendation is to adopt PRESS.
3:50	Administrative Personnel Other Than the Superintendent	Policy is unchanged. Footnotes are updated in response to new legislation. Recommendation is to adopt PRESS.

4:15	Identity Protection	Policy, Legal References and footnotes are updated. Recommendation is to adopt PRESS.
4:30	Revenue and Investments	Policy, Legal References and footnotes are updated in response to Public Funds Investment Act. Recommendation is to adopt PRESS.
4:40	Incurring Debt	Policy is unchanged. Footnotes updated in response to new legislation. Recommendation is to adopt PRESS.
4:60	Purchases and Contracts	Policy and footnotes are updated in response to new legislation. Recommendation is to adopt PRESS.
4:80	Accounting and Audits	Policy and footnotes are updated in response to new legislation. Recommendation is to adopt PRESS.
4:110	Transportation	Current policy has language pertinent to District 57. Recommendation is maintain current policy.
4:140	Waiver of Student Fees	Policy is unchanged. Footnotes updated in response to new legislation. Recommendation is to adopt PRESS.
4:150	Facility Management and Building Programs	Legal References and footnotes are updated. Recommendation is to adopt PRESS.
4:170	Safety	Policy is unchanged. Footnotes updated in response to new legislation. Recommendation is to adopt PRESS.
4:175	Convicted Child Sex Offender; Screening; Notifications	Policy is unchanged. Footnotes updated in response to new legislation. Recommendation is to adopt PRESS.
5:10	Equal Employment Opportunity and Minority Recruitment	Policy, Legal References, Cross References and footnotes are updated. Recommendation is to adopt Press.
5:20	Workplace Harassment Prohibited	Policy, Legal References, and footnotes are updated in response to new legislation. Recommendation is to adopt PRESS.
5:30	Hiring Process and Criteria	Policy and footnotes are updated in response to new legislation. Recommendation is to adopt PRESS.
5:50	Drug- and Alcohol-Free Workplace; E-Cigarette, Tobacco, and Cannabis Prohibition	Policy renamed. Policy and footnotes are updated in response to new legislation. Recommendation is to adopt PRESS.
5:90	Abused and Neglected Child Reporting	Policy, footnotes and Cross References are updated in response to new legislation. Recommendation is to adopt PRESS.
5:100	Staff Development Program	Legal References and footnotes are updated in response to new legislation. Recommendation is to adopt PRESS.

** IASB policies are on an automatic 5 year review cycle regardless of any legislative change.*

Mount Prospect School District 57
Office of the Assistant Superintendent for Finance and Operations

TO: Dr. Elaine Aumiller, Superintendent

FROM: Adam Parisi, Assistant Superintendent for Finance and Operations/CSBO

DATE: January 23, 2020

RE: Summer 2020 Site Work and Building Improvements Bid
 Policy 4:150 Facility Management and Building Programs

EXECUTIVE SUMMARY:

Annually, the Board of Education has been addressing capital improvements through its Master Facility Plan. At the October 17, 2019 meeting, the District-wide summer construction plans were presented. On December 19, 2019, the District construction manager, Nicholas & Associates, published a bid notice to perform the site work and building improvements with a scheduled bid opening on January 9, 2020. Dollars will be spent from the FY20 and FY21 budgets.

BACKGROUND AND RATIONALE:

The summer 2020 site work and building improvements are as follows and consist of the following bid packages: 1) earthwork & site utilities, 2) concrete, 3) asphalt, 4) general trades, 5) flooring, 6) HVAC, and 7) electrical.

School	Construction Project
Lincoln	Replace Busse Gymnasium HVAC Unit & Install Air Conditioning Replace HVAC Controls for Gymnasium and Main Offices Replace Floors in all classrooms, cafeteria, and locker rooms Repair and repaint hallway lockers Add 2 Generators
Westbrook	Replace HVAC Controls Replace Asphalt in Basketball Courts Install Sensory Floors in EC Hallway
Lions Park	Rebuild and expand Parking Lot Install Air Conditioning in Gymnasium Replace Large Chiller and HVAC Controls
Fairview	Rebuild and expand Parking Lot
Administration	Build Receiving Room at Dock Entrance Replace Windows and remove asbestos (*Bid as Alternate)

Bid Results are as follows. The lowest, responsible, responsive bidder is listed in **bold**:

Bid Package # 1 - Earthwork & Site Utilities	
Contractor	Bid
Riemer Engineering	\$1,174,194
Albrecht Enterprises	\$964,900
Berger	\$1,004,000
Fox	\$1,279,975
A Lamp	\$1,017,398
Bid Package # 2 - Concrete	
Contractor	Bid
Cibulka	\$183,910
Eagle	\$181,700
Fogarty	\$169,820
A Lamp	\$179,002
Bid Package # 3 - Asphalt	
Contractor	Bid
Arrow	\$448,000
Accu-paving	\$452,450
A Lamp	\$458,406
Superior	\$469,300
Bid Package # 4 - General Trades	
Contractor	Bid
RB	\$378,000
Monarch	\$398,500
D Kersey	\$444,800
Bid Package # 5 - Flooring	
Contractor	Bid
Libertyville	\$542,427
Johnson	\$308,818
Consolidated	\$293,680
Bid Package # 6 - HVAC	
Contractor	Bid
Jensens	\$441,000
Amber	\$438,000
MG	\$407,400
General	\$364,000
Hartwig	\$362,976

Bid Package # 7 - Electrical	
Contractor	Bid
Carey	\$327,538
American	\$329,000
Argon	\$453,000
Prospect	\$359,000

RECOMMENDED BOARD ACTION:

That the Board of Education approve the following contractors to complete the summer 2020 site work and building improvements as bid:

- Bid Package #1 Earthwork and Site Utilities: Albrecht \$ 964,900
- Bid Package #2 Concrete: Fogarty \$ 169,820
- Bid Package #3 Asphalt: Arrow Road \$ 448,000
- Bid Package #4 General Trades: RB \$ 378,000
- Bid Package #5 Flooring: Consolidated \$ 293,680
- Bid Package #5 Flooring Materials: Source well \$ 123,523
- Bid Package #6 HVAC: Hartwig \$ 362,976
- Bid Package #7 Electrical: Carey \$ 327,538

Total of 7 Bid Packages: \$ 3,068,437

Also, the Administration recommends the Board discuss and possibly approve the following alternate bid of improving the drainage near the houses adjacent to the Lions Park Parking Lot.

- Bid Package #1 Earthwork and Site Utilities: Albrecht \$ 22,500

Mount Prospect School District 57
Office of the Assistant Superintendent for Finance and Operations

TO: Dr. Elaine Aumiller, Superintendent

FROM: Adam Parisi, Assistant Superintendent for Finance and Operations/CSBO

DATE: January 23, 2020

RE: Student Fees for the 2020-21 School Year
Policy 4:140 Waiver of Student Fees

EXECUTIVE SUMMARY:

Annually, the subject of a schedule for student fees for the upcoming school year is addressed by the Board with respect to the following categories: curriculum, supplies and other fees, transportation, extracurricular, lunch program, summer school, preschool, and child care. The need to receive timely approval of such a schedule is required to begin planning for the next school year's registration process.

BACKGROUND AND RATIONALE:

At the December 19, 2019 Meeting, the Board of Education discussed student fees. Attached is the proposed fee structure for the 2020-2021 school year. Such fees include:

- Curriculum Fees
- Supplies and Other Fees
- Transportation Fees
- Extracurricular Fees
- Lunch Program Fees
- Summer School Fees
- Preschool Fees
- Child Care Fees (Kids' Corner)

RECOMMENDED BOARD ACTION:

That the Board of Education approve the fees for the 2020-2021 school year.



Mount Prospect School District 57 Student Fees 2020-21 School Year

<i>CURRICULUM</i>	By 6/8/20	6/9/20 and After
Kindergarten	\$95	\$120
Grades 1 to 5	\$115	\$140
Grades 6 to 8	\$125	\$150

*SUPPLIES AND OTHER**

Field Trip Admittance/Activity	Cost
Recorder (3)	\$7
Band Practice Book (6-8)	\$10
Combination Padlock (6-8)	\$5
Physical Education Uniform (6)	\$23
Yearbook (6-8)	\$25
Graduation (8)	\$43

<i>TRANSPORTATION</i>	By 6/8/20	6/9/20 and After
Annual Fee	\$375	\$450
Payment Plan		
First Payment		\$225
Second Payment (Due 11/1)		\$225
Field Trip		Cost

EXTRACURRICULAR

Interscholastic Athletics (6-8)	\$140
Intramural Athletics and Clubs (1-8)	\$25
Performing Arts (3-8)	\$60

LUNCH PROGRAM

Tier A	*TBD
Tier B	*TBD
Tier C	*TBD
Milk	\$0.50
Annual Milk Pass	\$85.50

SUMMER SCHOOL

Extended School Year (ESY)	No Charge
Band/Orchestra	\$50

PRESCHOOL

Registration Fee	\$100
Supply Fee	*TBD
Circle of Friends Tuition	\$1,930

CHILD CARE

Registration Fee	\$50
------------------	------

	Part Time 2 or Less Days/Week	Full Time 3 or More Days/Week
Kids' Corner Program		
Before School (K-1)	\$57	\$76
Before School (2-5)	\$45	\$60
After School (K-1)	\$53	\$70
After School (2-5)	\$65	\$86

* Other nominal fees may apply as a result of student participation in a program.